

# WATERPROOF CABLE GLAND

For electrical and electronic panels and equipment.

Material: nylon PA, with sealing ring nitrilebutadienerubber (NBR);

Protection degree: IP68;

Models with metric or inch thread;

Static operating temperature: -40°C to 100°C,  
instant heat resistance up to 120°C;

Dynamic operating temperature: -20°C to 80°C,  
instant heat resistance up to 100°C.



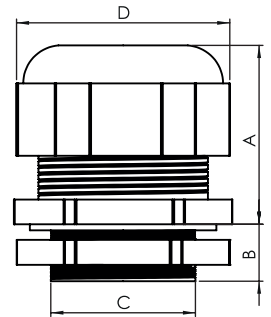
## DIMENSIONS

### INCH THREAD (BSP)

MODELS	THREAD (inch)	CABLE DIAMETER (mm)		HOLE SIZE (mm)		DIMENSIONS (mm)			
		MIN	MAX	MIN	MAX	A	B	C	D
PCP 14P	1/4"	3	6.5	13.2	13.6	20	8	13.15	17,4
PCP 38P	3/8"	5	10	16.7	17.1	24	8	16.66	23,6
PCP 12P	1/2"	6	12	21	21.4	27	9	20.95	27
PCP 34P	3/4"	14	18	26.5	26.9	30	10	26.44	36
PCP 1P	1"	18	25	33.3	33.7	38	12	33.25	46
PCP 114P	1 1/4"	24	32	42	42.4	45	14	41.9	58,6
PCP 112P	1 1/2"	32	38	47.9	44.8	47	14	47.8	67,6
PCP 2P	2"	37	44	59.7	60.1	54	18	59.6	72,6

### METRIC THREAD

MODELS	THREAD (mm)	CABLE DIAMETER (mm)		HOLE SIZE (mm)		DIMENSIONS (mm)			
		MIN	MAX	MIN	MAX	A	B	C	D
PCP 12M	M12	3	6.5	12.1	12.5	20	8	12	17,4
PCP 16M	M16	4	8	16.1	16.5	22	8	16	20,5
PCP 20M	M20	10	14	20.1	20.5	25	9	20	26,7
PCP 25M	M25	13	17	25.1	25.5	32	9	25	35,8
PCP 32M	M32	16	21	32.1	32.5	38	11	32	38,8
PCP 36M	M36	18	25	36.1	36.5	38	12	36	45,9
PCP 40M	M40	24	32	40.1	40.5	45	14	40	58,5
PCP 50M	M50	32	38	50.1	50.5	47	14	50	67,8
PCP 63M	M63	37	44	63.1	63.5	47	14	63	73



## SELECTION GUIDE

### INCH THREAD (BSP)

PC Cable gland	P Material	□□□ P Thread	□ Color
	Plastic	14 = 1/4" pol 38 = 3/8" pol 12 = 1/2" pol 34 = 3/4" pol 1 = 1" pol 114 = 1 1/4" pol 112 = 1 1/2" pol 2 = 2" pol	Gray Black

### METRIC THREAD

PC Cable gland	P Material	□□ M Thread	□ Color
	Plastic	12 = M12 16 = M16 20 = M20 25 = M25 32 = M32 36 = M36 40 = M40 50 = M50 63 = M63	Gray Black