

47.000 SERIES

SNAP ACTION MICROSWITCHES

SPECIFICATIONS:

ELECTRICAL CHARACTERISTICS: 6A in 120/250VCA

CONTACT RESISTANCE: maximum of 10 miliohms with 1A DC.

INSULATION RESISTANCE: minimum of 1,000 megaohms.

DIELECTRIC WITHSTAND: 1,000V(RMS) for 1 minute (minimum).

OPERATION TEMPERATURE: from 0°C to 55°C.



REFERENCE

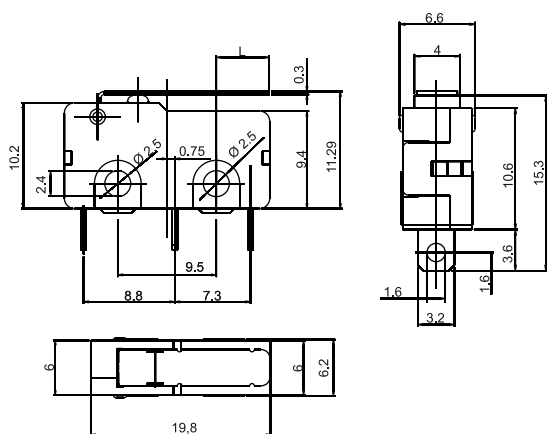
| Reference | Pos 1 | Pos 2 | Function |
|-----------|-------|-------|----------|
| 47.108 | (ON) | ON | IR |
| 47.127 | (ON) | OFF | NA |
| 47.129 | (OFF) | ON | NF |

() Momentary

IR - Reversible

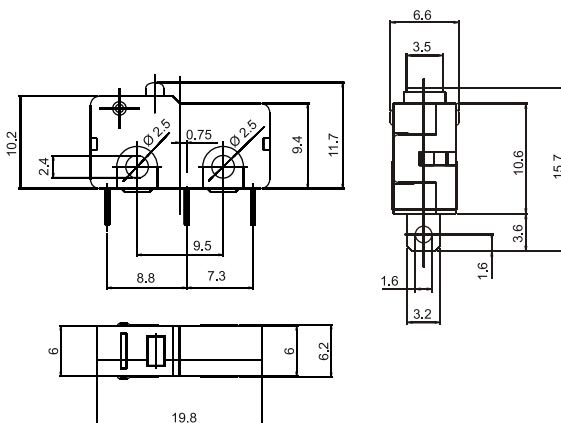
NA - Normally opened

NF - Normally closed



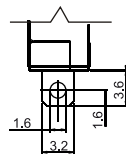
A2 - Actuator with rigid toggle

Note: For other actuator A2 sizes and other types of actuator, call us.

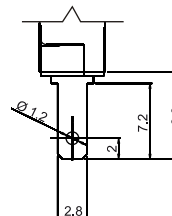


A1 - Actuator with basic pin

TERMINALS



S1 - Solder 3,2 x 0,5



E1 - Faston 2,8 x 0,5

CONTACT

B

6A in 120/250V~

SELECTION GUIDE

| | | | |
|-----------|-----------|-----------|----------|
| □□□□□ | □□□□ | □□ | □ |
| Reference | actuator | terminal | contact |
| | A1 | S1 | B |
| | A2 | E1 | |