

32.000 SERIES

ROCKER SWITCHES

SPECIFICATIONS:

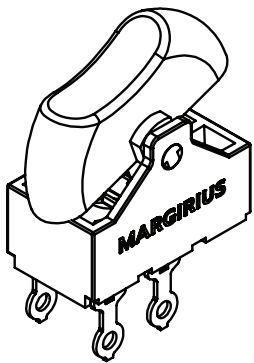
ELECTRICAL CHARACTERISTICS: 10A/250VCA (Q Contact) or 2A/250VCA (S Contact) - resistive load.

CONTACT RESISTANCE: maximum of 20 miliohms with 1A in DC.

INSULATION RESISTANCE: minimum of 1.000 megaohms.

DIELECTRIC WITHSTAND: 1.250V(RMS) for 1 minute (minimum).

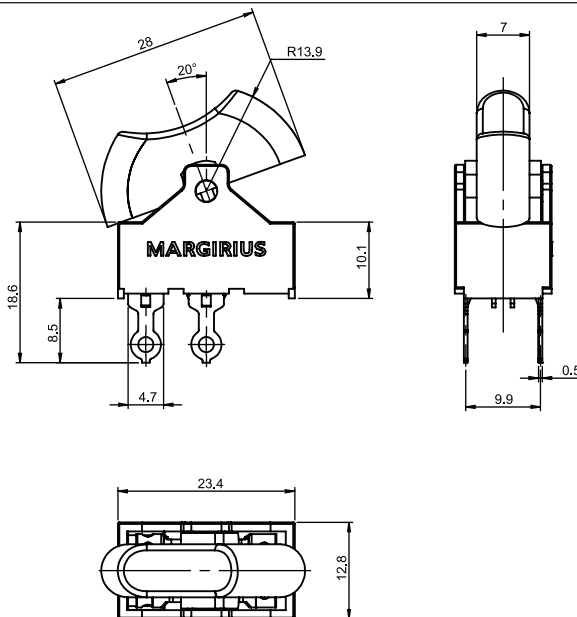
OPERATION TEMPERATURE: from 0°C to 55°C.



REFERENCE

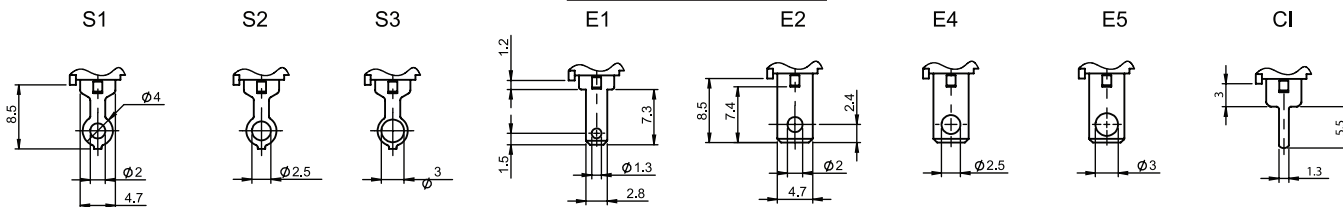
Reference			
32121			

Note: C = common terminal



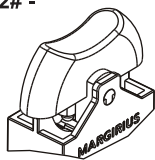
TERMINAL

Quick coupling



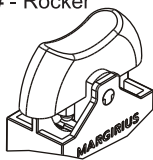
FRAME

M2# -



ACTUATOR

T2# - Rocker



- COLORS

A - Blue
B - White
C - Yellow
D - Green
E - Red
F - Black (standard)
G - Gray
H - Brown

Obs.:
Substitute # by
the code of
request color.

CONTACT

S - copper
2A with resistive
load 250VAC

Q - Silver
10A with resistive
load 250VAC

SELECTION GUIDE

32121

Reference

□□□

frame
M2#

□□□

actuator
T2#

□□

terminal
S1 | E3
S2 | E4
S3 | E5
E1 | CI
E2

□

contact
S
Q

Note: If you do not substitute the symbol # by the code color, it will imply the standard black color F.