

Certified Product *



* Call us

24.000 SERIES

PUSHBUTTON SWITCHES

SPECIFICATIONS:

ELECTRICAL CHARACTERISTICS: 1A with resistive load 120VAC or 0,5A with resistive load 250VAC.

CONTACT RESISTANCE: maximum of 20 miliohms with 1A DC.

INSULATION RESISTANCE: minimum of 1.000 megaohms.

DIELECTRIC WITHSTAND: 1.000V(RMS) for 1 minute (minimum).

OPERATION TEMPERATURE: from 0°C to 55°C.



REFERENCES

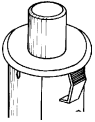
24.531 - normally opened

24.533 - normally closed

FRAMES

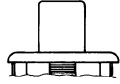
M1# - fastening fang holded on the body

M2# - fastening fang unfaten on the body

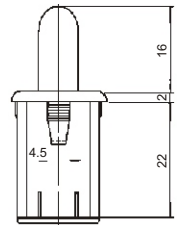
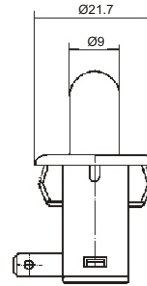
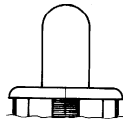


ACTUATORS

A1# - flat actuator 10,4mm.

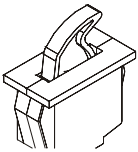


A2# - round actuator 16,0mm.



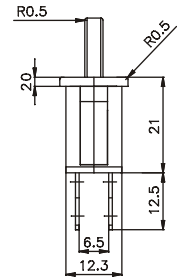
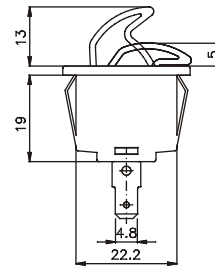
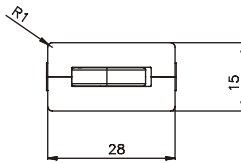
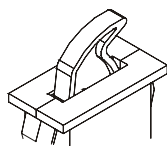
FRAME

M3#



ACTUATOR

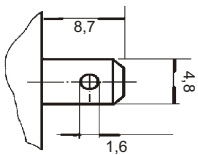
A3#



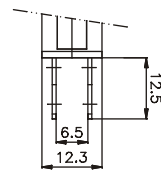
Note: Only available for reference 24533 (normally closed)

TERMINALS

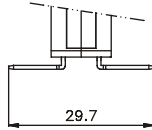
E2 - 4,8 x 0,5



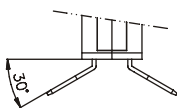
W1 - 4,8 x 0,8



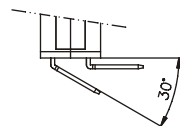
W2 - 4,8 x 0,8



W3 - 4,8 x 0,8



W4 - 4,8 x 0,8



CONTACT

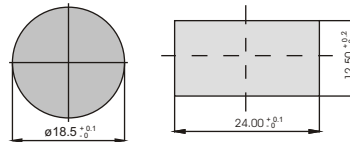
B

0,5A with resistive load 120VAC
0,25A with resistive load 250VAC

S

1A with resistive load 120VAC
0,5A with resistive load 250VAC

CUT FOR FIT



- COLORS

Note: Substitute # by the code of requested color.

- A - blue
- B - white
- C - yellow
- D - green
- E - red
- F - black - (standard)
- G - gray
- H - brown

SELECTION GUIDE

Frame M1# or M2#



Reference

frame

actuator

terminal

contact

M1#
M2#

A1#
A2#

E2

S

Frame M3#

24533



Reference

frame

actuator

terminal

contact

M3#

A3#

W1
W2
W3
W4

B