

22.000 SERIES

ROCKER SWITCHES

SPECIFICATIONS:

ELECTRICAL CHARACTERISTICS: 15A with resistive load 120V~ or 10A with resistive load 250V~ (Q Contact).

CONTACT RESISTANCE: maximum of 20 miliohms with 1A DC.

INSULATION RESISTANCE: minimum of 1.000 megaohms.

DIELECTRIC WITHSTAND: 1.000V(RMS) for 1 minute (minimum).

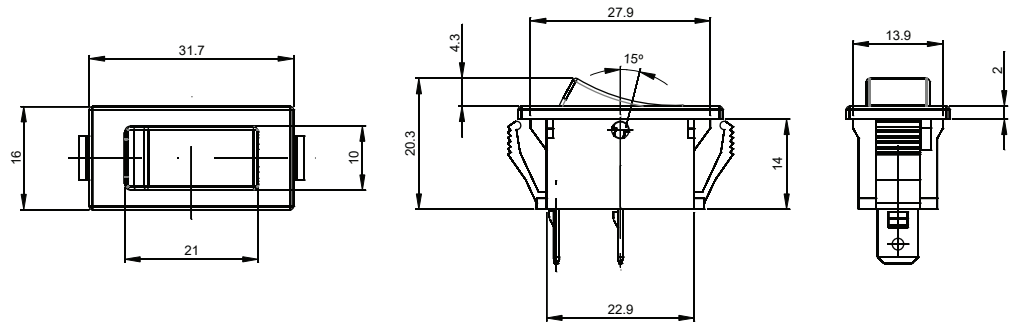
OPERATION TEMPERATURE: from 0°C to 55°C.



REFERENCES

Reference		
22.101	ON	ON
22.108	ON	(ON)
22.123	ON	OFF
22.127	(ON)	OFF
22.129	ON	(OFF)

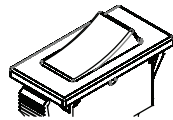
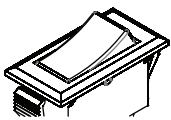
() Momentary



FRAMES

M1#

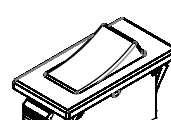
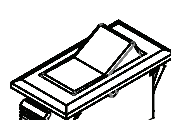
M2#



ACTUATORS

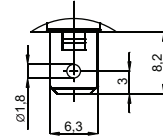
T1#

T2# - standard



TERMINAL

E3 - faston 6,3 x 0,8



CONTACTS

S - Standard

4A with resistive load 120V~.
2A with resistive load 250V~.

B

10A with resistive load 120V~.
6A with resistive load 250V~.

Q

15A with resistive load 120V~.
10A with resistive load 250V~.

G

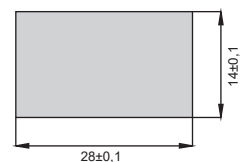
20A with resistive load 120V~.
15A with resistive load 250V~.

- COLORS

Note: Substitute # by the code os requested color.

- A - blue
- B - white
- C - yellow
- D - green
- E - red
- F - black - (standard)
- G - gray
- H - brown

CUT FOR FIT



Minimum panel tickness: 1,0 ±0,1mm

Maximum panel tickness: 4,0 ±0,1mm

SELECTION GUIDE



Reference



frame

M1#
M2#



atuactor

T1#
T2#



terminal

E3



contact

S
B
Q
G

Note.: If you do not replace the symbol # by the code color, it will imply the standard black color F.