

16.200 SERIES

ROCKER SWITCHES

SPECIFICATIONS:

ELECTRICAL CHARACTERISTICS: 10A with resistive load 120VAC and 6A with resistive load 250VAC (B contact).

CONTACT RESISTANCE: maximum of 10 miliohms with 1A DC.

INSULATION RESISTANCE: minimum of 1.000 megaohms.

DIELECTRIC WITHSTAND: 1.000V(RMS) for 1 minute (minimum).

OPERATION TEMPERATURE: from 0°C to 55°C.



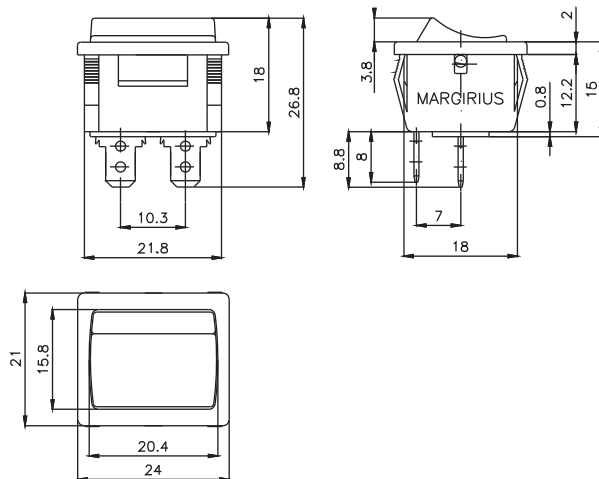
REFERENCES

SINGLE-POLE

| Reference | | | |
|-----------|------|-----|-------|
| 16.101 | ON | - | ON |
| 16.103 | ON | OFF | ON |
| 16.105 | (ON) | OFF | (ON) |
| 16.107 | ON | OFF | (ON) |
| 16.108 | ON | - | (ON) |
| 16.123 | ON | - | OFF |
| 16.127 | (ON) | - | OFF |
| 16.129 | ON | - | (OFF) |

DOUBLE-POLE

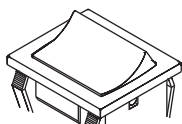
| Reference | | | |
|-----------|------|-----|-------|
| 16.201 | ON | - | ON |
| 16.203 | ON | OFF | ON |
| 16.205 | (ON) | OFF | (ON) |
| 16.207 | ON | OFF | (ON) |
| 16.208 | ON | - | (ON) |
| 16.223 | ON | - | OFF |
| 16.227 | (ON) | - | OFF |
| 16.229 | ON | - | (OFF) |



() momentary

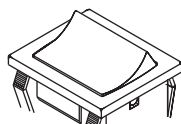
FRAME

M11# - Standard



ACTUATORS

T1# - Standard

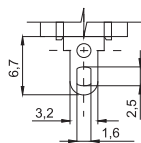


T2## - Double rocker

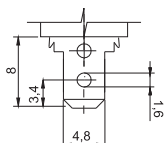


TERMINALS

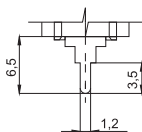
S1 - solder (standard)



E2 - faston 4,8 x 0,8



CI - Terminal PC



CONTACTS

S - Standard

6A with resistive load 120VAC
3A with resistive load 250VAC.

B

10A with resistive load 120VAC
6A with resistive load 250VAC.

G

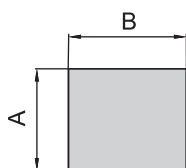
15A with resistive load 120VAC
10A with resistive load 250VAC.

- COLORS

Note: Substitute # by the code of requested color.

- A - blue
- B - white
- C - yellow
- D - green
- E - red
- F - black - (standard)
- G - gray
- H - brown

CUT FOR FIT



| Panel thickness | A | B |
|-----------------|-----------|-----------|
| 0,5 | 19,2 +0,2 | 21,9 +0,2 |
| 1 | | 22,0 +0,2 |
| 1,5 | | |
| 2 | | |

SELECTION GUIDE

| | | | | |
|-----------|-------------|---------------------------|-------------------------------------|----------------------------------|
| | | | | |
| Reference | frame | actuator | terminal | contact |
| | M11# | T1# T2## | S1 E2 CI | S B G |

Note: The single-phase switches (16.100) may not be codified with the T2## rocker.