

# 16.000 SERIES

## PUSHBUTTON SWITCHES

### SPECIFICATIONS:

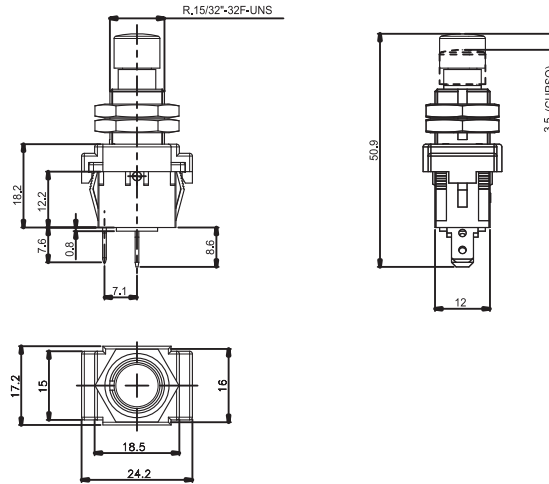
- ELECTRICAL CHARACTERISTICS:** 10A with resistive load 120VAC or 6A with resistive load 250VAC ( B contact).
- CONTACT RESISTANCE:** maximum of 10 miliohms with 1A DC.
- INSULATION RESISTANCE:** minimum of 1.000 megaohms.
- DIELECTRIC WITHSTAND:** 1.000V(RMS) for 1 minute (minimum).
- OPERATION TEMPERATURE:** from 0°C to 55°C.



### REFERENCES

Reference	Pos 1	Pos 2
16.101	ON	ON
16.108	ON	(ON)
16.123	ON	OFF
16.127	(ON)	OFF
16.129	ON	(OFF)

( ) momentary



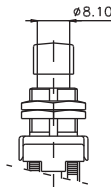
### ACTUATOR

**A1#** - standard

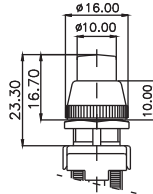


### NUTS

**B1#**

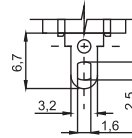


**B2#**

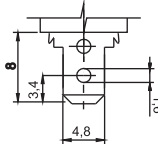


### TERMINALS

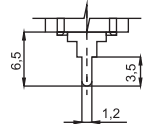
**S1** - solder (standard)



**E2** -faston 4,8 x 0,8



**CI** - Terminal PC



### CONTACTS

**S** - Standard

6A with resistive load 120VAC

3A with resistive load 250VAC

**B**

10A with resistive load 120VAC

6A with resistive load 250VAC

**G**

15A with resistive load 120VAC

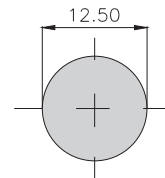
10A with resistive load 250VAC

### # - COLORS

**Note:** Substitute # by the code of requested color.

- A** - blue
- B** - white
- C** - yellow
- D** - green
- E** - red
- F** - black - (standard)
- G** - gray
- H** - brown

### CUT FOR FIT



### SELECTION GUIDE



Reference



actuator  
A1#



nut  
B1#  
B2#



terminal  
S1  
E2  
CI



contact  
S  
B  
G

Note: If you do not substitute the symbol # by the code color, it will imply the standard black color F.