

SÉRIE 17.000

MICROINTERRUPTORES DE ALAVANCA METÁLICA

ESPECIFICAÇÕES:

CARACTERÍSTICAS ELÉTRICAS: 5A com carga resistiva em 120 VCA ou 2A com carga resistiva em 250 VCA. (Contato Q)

RESISTÊNCIA DE CONTATO: máximo de 10 miliohms com aplicação de 1A em VCC.

RESISTÊNCIA DE ISOLAMENTO: mínimo de 1.000 megaohms.

RIGIDEZ DIELÉTRICA: 1000 V (RMS) para 1 minuto (mínimo).

TEMPERATURA DE OPERAÇÃO: 0°C a 55°C.



REFERÊNCIAS

Unipolares

Referência				() Momentâneo
17.101	LIGA	-	LIGA	
17.103	LIGA	DESL	LIGA	
17.105	(LIGA)	DESL	(LIGA)	
17.107	LIGA	DESL	(LIGA)	
17.108	LIGA	-	(LIGA)	
Terminais	2 - 3	-	2 - 1	

Bipolares

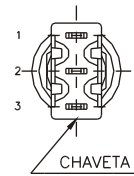
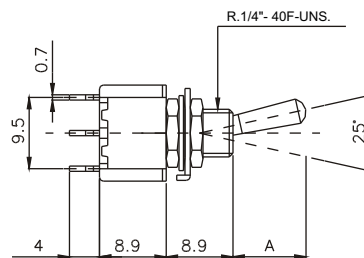
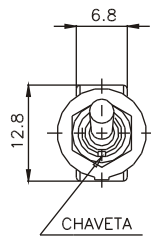
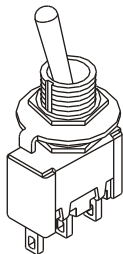
Referência				() Momentâneo
17.201	LIGA	-	LIGA	
17.203	LIGA	DESL	LIGA	
17.205	(LIGA)	DESL	(LIGA)	
17.207	LIGA	DESL	(LIGA)	
17.208	LIGA	-	(LIGA)	
Terminais	2 - 3	-	2 - 1	
	5 - 6	-	5 - 4	
17.211	LIGA	LIGA	LIGA	
17.213	LIGA	LIGA	(LIGA)	
17.215	(LIGA)	LIGA	(LIGA)	
Terminais	2 - 3	2 - 3	2 - 1	
	5 - 6	5 - 4	5 - 4	

Tripolares

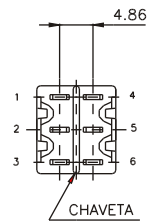
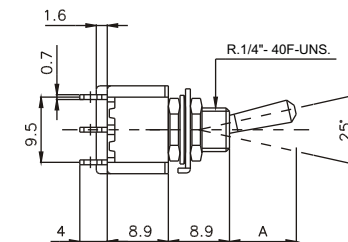
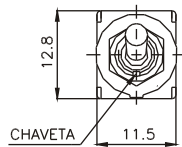
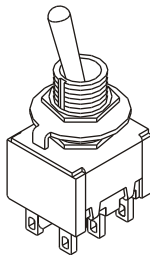
Referência				() Momentâneo
17.301	LIGA	-	LIGA	
17.303	LIGA	DESL	LIGA	
17.305	(LIGA)	DESL	(LIGA)	
17.307	LIGA	DESL	(LIGA)	
17.308	LIGA	-	(LIGA)	
Terminais	2 - 3	-	2 - 1	
	5 - 6	-	5 - 4	
	8 - 9	-	8 - 7	

ALAVANCA METÁLICA

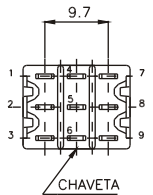
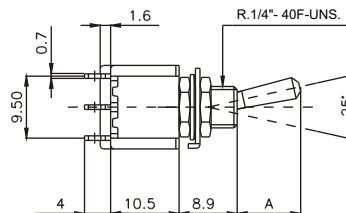
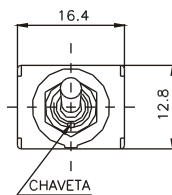
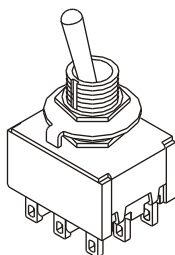
UNIPOLAR



BIPOLAR



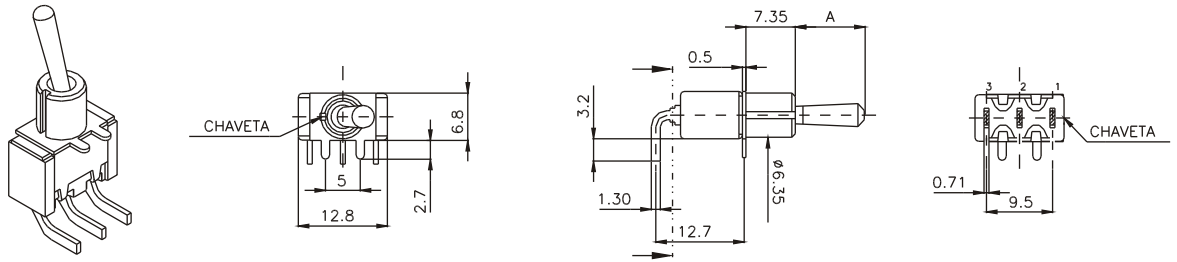
TRIPOLAR



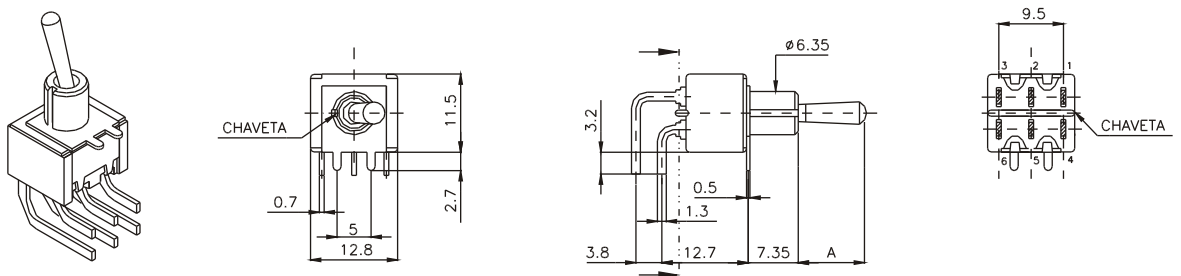
SÉRIE 17.000

ALAVANCA METÁLICA PARA CIRCUITO IMPRESSO MONTAGEM HORIZONTAL (TERMINAIS "MH")

UNIPOLAR

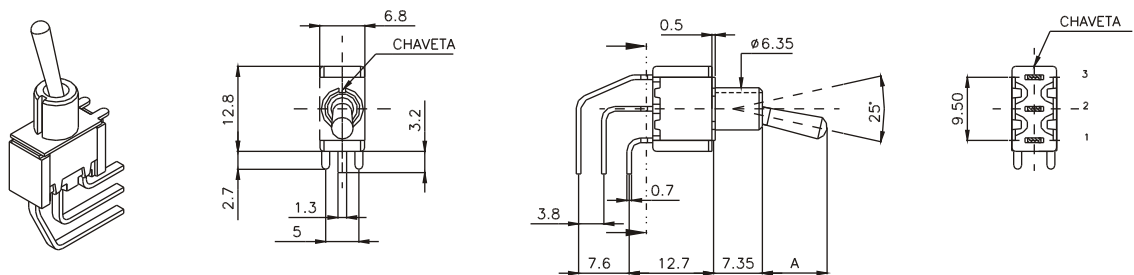


BIPOLAR

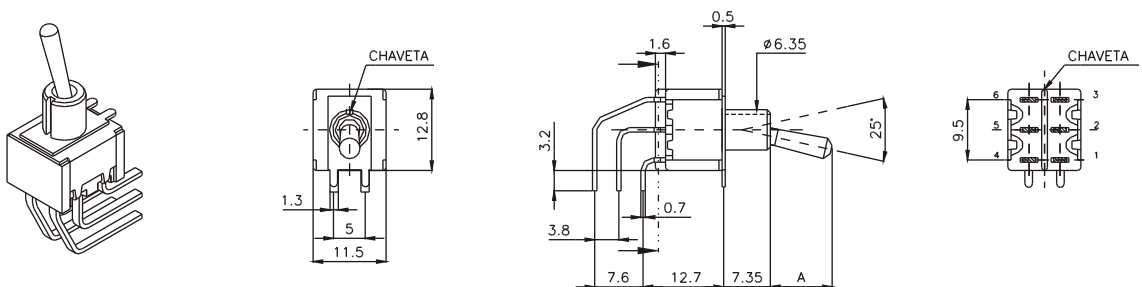


ALAVANCA METÁLICA PARA CIRCUITO IMPRESSO MONTAGEM VERTICAL (TERMINAIS "MV")

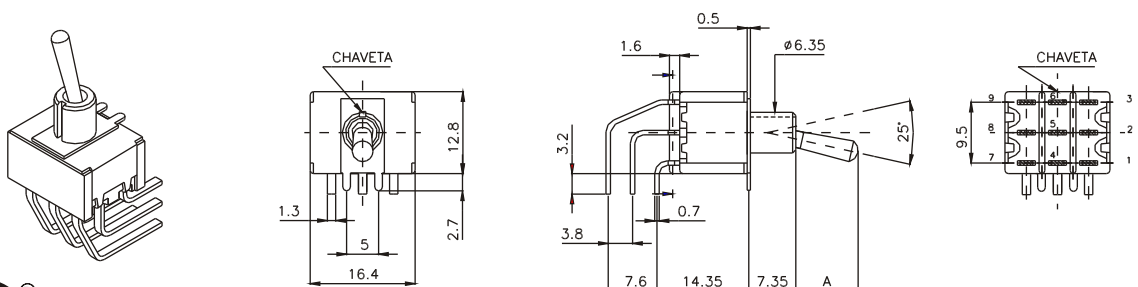
UNIPOLAR



BIPOLAR



TRIPOLAR

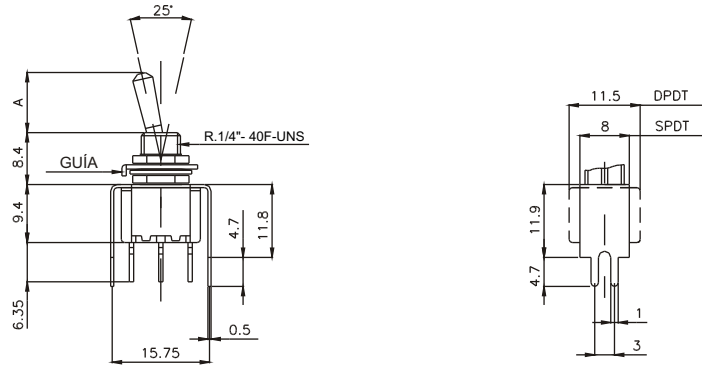
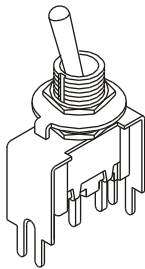


SÉRIE 17.000

ALAVANCA METÁLICA PARA CIRCUITO IMPRESSO

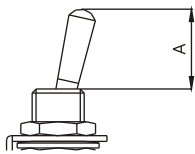
MONTAGEM TOPO (TERMINAIS "MT")

UNIPOLAR
BIPOLAR



ATUADORES, BUCHAS E PORCAS

ATUADORES

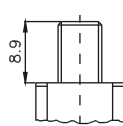


TIPO	MEDIDA (mm)*
A1	5
A2	10
A3	14
A4	16

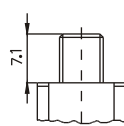
* Dimensões consideradas com referência a bucha B1-Standard.

BUCHAS

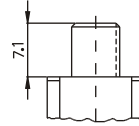
B1 - standard



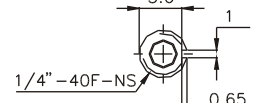
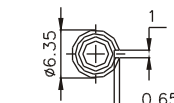
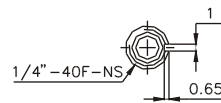
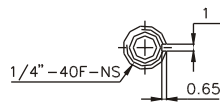
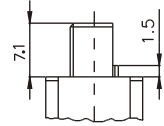
B2 - curta



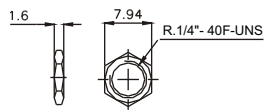
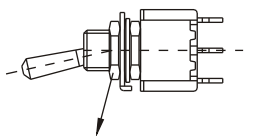
B3 - lisa



B4 - fresada

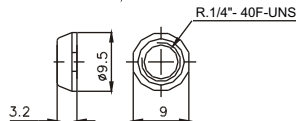
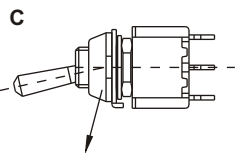


PORCAS

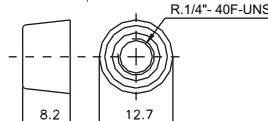
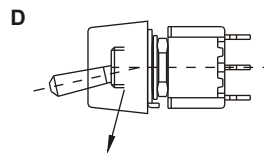


Standard

OUTRAS OPÇÕES



Cônica

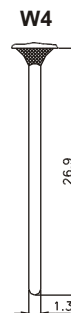
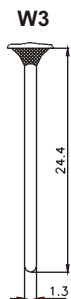
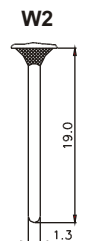
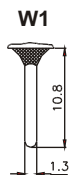
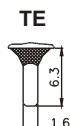
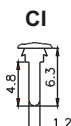
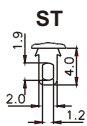


Cônica

OBS.: As buchas B1, B2, B4 são acompanhadas normalmente de 2 arruelas, sendo 1 localizadora, 1 de trava, e 2 porcas sextavadas. Caso se opte pela porca cônica acrescentar ao código da Bucha a Letra "C" ou "D".

Ex.: B1C - Bucha tipo B1 com 1 arruela localizadora e 1 porca sextavada e 1 porca cônica.

TERMINAIS



OBS.: Estes terminais não estão disponíveis para os microinterruptores em montagem horizontal, vertical e topo, já que seus terminais são especificados como **MH**, **MV** e **MT** respectivamente, conforme barra de codificação.

Todos os terminais recebem normalmente o selo de epoxi.

SÉRIE 17.000

CONTATOS

S - Cobre com banho de prata (standard)
3A com carga resistiva - 120 VCA.
1A com carga resistiva - 250 VCA.

Q - Liga de prata / níquel
5A com carga resistiva - 120 VCA.
2A com carga resistiva - 250 VCA.

B - Cobre com banho de ouro, sobre banho de níquel.
0,4 Volts-Amps (VA) máx. - 20V máx. (CA/CC).

G - Liga de prata / níquel com banho de ouro.
5A com carga resistiva - 120 VCA.
2A com carga resistiva - 250 VCA.
0,4 Volts-Amps (VA) máx - 20V máx (CA/CC).

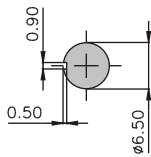
SELO



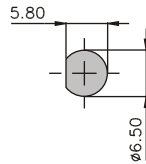
Obs.: Todo interruptor recebe selo, conseqüentemente acrescentar a letra **E** no final da codificação.

FURAÇÕES

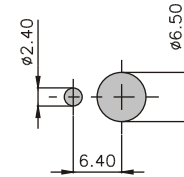
PAINEL PARA CHAVES DE ALAVANCA METÁLICA



Alojamento para buchas

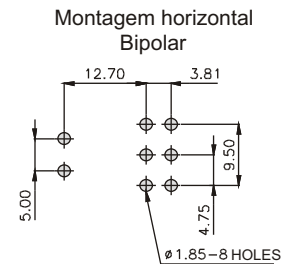
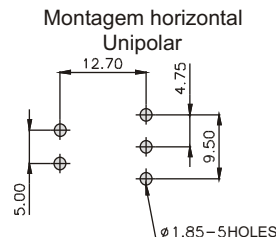
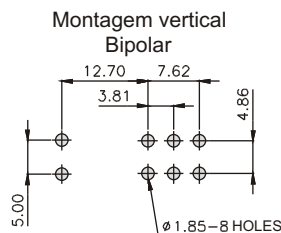
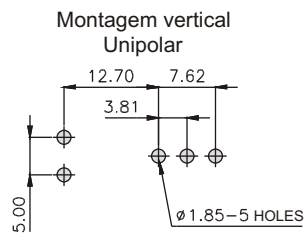


Alojamento para buchas fresadas



Alojamento para arruelas

GUIA DE FURAÇÃO PARA CIRCUITO IMPRESSO



BARRAS DE CODIFICAÇÃO

Alavancas metálicas

Referência	alavanca	bucha	terminal	contato	selo
	A1	B1	ST	S	E
	A2	B2	CI	B	
	A3	B3	TE	Q	
	A4	B4	W1	G	
		B1C	W2		
		B2C	W3		
		B4C	W4		
		B1D			
		B2D			
		B4D			

Alavancas metálicas montagem horizontal, vertical e topo

Referência	alavanca	bucha	terminal	contato	selo
	A1	B1	MH	S	E
	A2	B2	MV	B	
	A3	B3	MT	Q	
	A4	B4		G	
		B1C			
		B2C			
		B4C			
		B1D			
		B2D			
		B4D			

Montagem horizontal (MH) não disponível para referências TRIPOLARES (17.3XX).