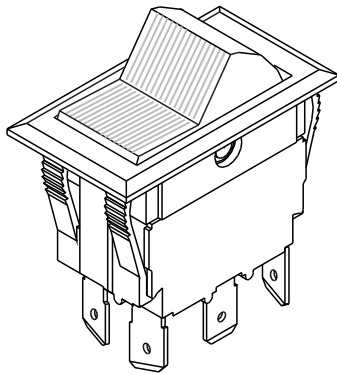


# SÉRIE 14.000

## INTERRUPTORES DE TECLA



### ESPECIFICAÇÕES:

**CARACTERÍSTICAS ELÉTRICAS:** 15A com carga resistiva em 120 VCA ou 10A com carga resistiva em 250 VCA. (Contato Q).

**RESISTÊNCIA DE CONTATO:** máximo de 20 miliohms com aplicação de 1A em VCC.

**RESISTÊNCIA DE ISOLAMENTO:** mínimo de 1.000 megohms.

**RIGIDEZ DIELÉTRICA:** 1000 V (rms) para 1 minuto (mínimo).

**TEMPERATURA DE OPERAÇÃO:** 0°C a 55°C



### REFERÊNCIAS

#### Unipolares

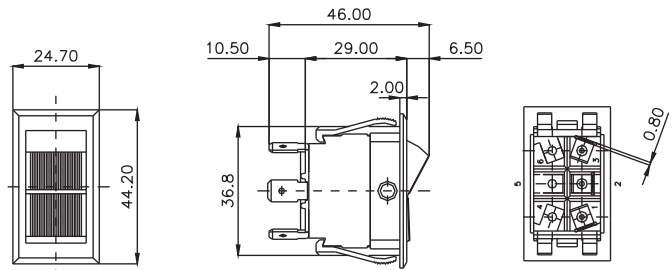
Referência			
14.101	LIGA	-	LIGA
14.103	LIGA	DESL	LIGA
14.105	(LIGA)	DESL	(LIGA)
14.107	LIGA	DESL	(LIGA)
14.108	LIGA	-	(LIGA)
* 14.123	LIGA	-	DESL
14.127	(LIGA)	-	DESL

( ) Momentâneo

\* Possíveis opções com lâmpadas 120/250 VCA

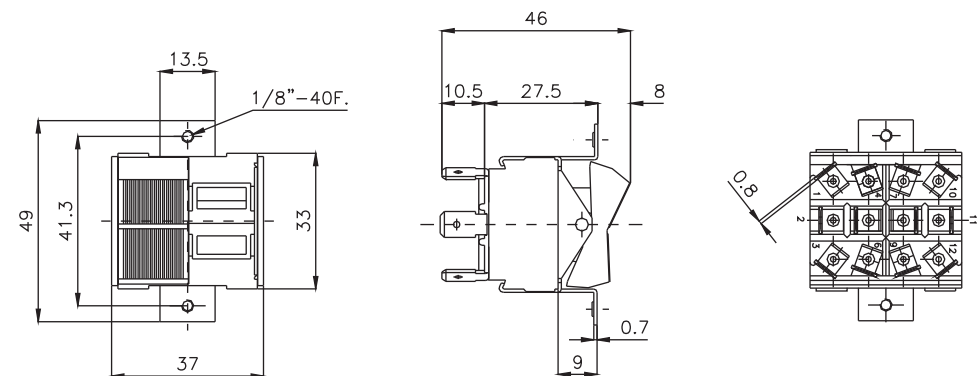
#### Bipolares

Referência			
14.201	LIGA	-	LIGA
14.203	LIGA	DESL	LIGA
14.205	(LIGA)	DESL	(LIGA)
14.207	LIGA	DESL	(LIGA)
14.208	LIGA	-	(LIGA)
14.211	LIGA	LIGA	LIGA
14.213	LIGA	LIGA	(LIGA)
14.215	(LIGA)	LIGA	(LIGA)
14.223	LIGA	-	DESL
14.227	(LIGA)	-	DESL



#### Quadripolares

Referência			
14.401	LIGA	-	LIGA
14.403	LIGA	DESL	LIGA
14.405	(LIGA)	DESL	(LIGA)
14.407	LIGA	DESL	(LIGA)
14.408	LIGA	-	(LIGA)
14.411	LIGA	LIGA	LIGA
14.413	LIGA	LIGA	(LIGA)
14.415	(LIGA)	LIGA	(LIGA)
14.423	LIGA	-	DESL
14.427	(LIGA)	-	DESL

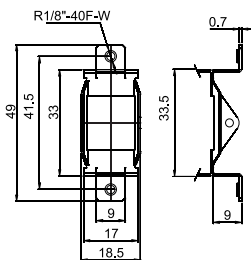


### SUPORTES

**S1C** - rasgo 3,5 mm.

**S1R** - rosca R.1/8"-40F-W

**S1F** - furo Ø 4,0 mm.

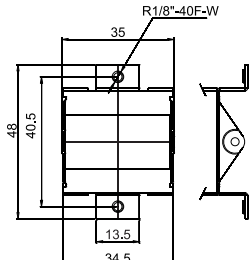


S1R

**S2C** - rasgo 3,5 mm.

**S2R** - rosca R.1/8"-40F-W

**S2F** - furo Ø 4,0 mm.

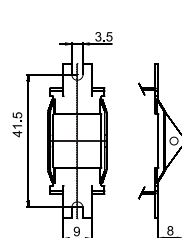


S2R

**S3C** - rasgo 3,5 mm.

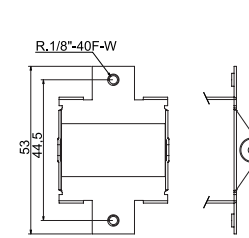
**S3R** - rosca R.1/8"-40F-W

**S3F** - furo Ø 3,5 mm.



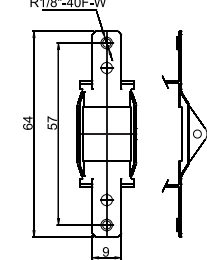
S3C

**S4R** - rosca R.1/8"-40F-W



S4R

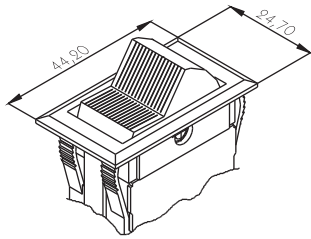
**S5R** - rosca R.1/8"-40F-W



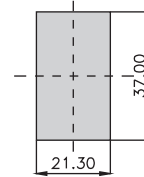
S5R

# SÉRIE 14.000

## MOLDURA - M#



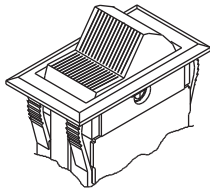
## RASGO PARA ENCAIXE



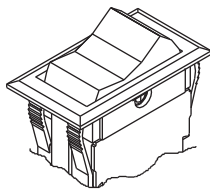
Espessura do painel entre 1,0 e 4,5mm

## ATUADORES DE POLIAMIDA

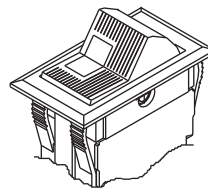
T1#



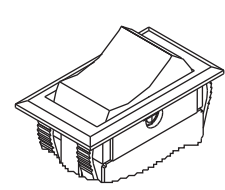
T2#



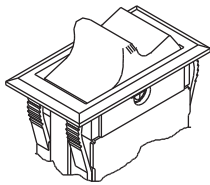
T3##



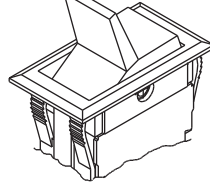
R1#



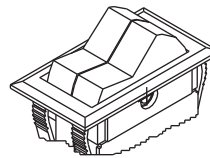
T5#



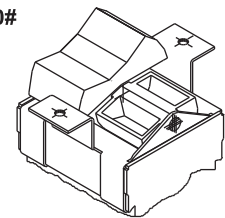
T6#



T7##

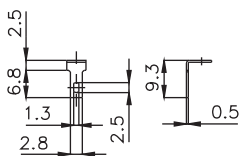


T20#

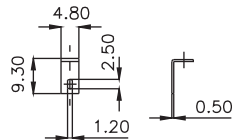


## TERMINAIS

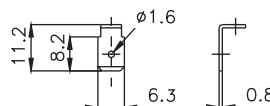
E1 - Engate rápido  
2,8 x 0,5 (standard)



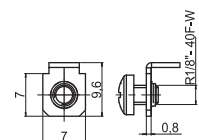
E2 - Engate rápido 4,8 x 0,5



E3 - Faston 6,3 x 0,8



P1 - Parafuso



## CONTATOS

**Q**  
15A com carga resistiva em 120VCA  
10A com carga resistiva em 250VCA

**G**  
20A com carga resistiva em 120VCA  
15A com carga resistiva em 250VCA

## # - CORES

Obs.: Substituir # pelo código da cor desejada.

- A - azul
- B - branco
- C - amarelo
- D - verde
- E - vermelho
- F - preto - (standard)
- G - cinza
- H - marrom

## OBSERVAÇÕES:

**T 3** - Tecla com visor luminoso - codificar a cor da tecla e do visor. **Ex.:** T3FE - tecla preta com visor vermelho.

**T 7** - Tecla dupla - codificar a cor das duas teclas. **Ex.:** T7BA - uma tecla branca e uma tecla azul.

## BARRA DE CODIFICAÇÃO

### Suportes

Referência	suporte	atuador	terminal	contato
S1	C	T1#	E1	Q
S3	R	T2#	E2	G
S5	F	T3#	E3	
S2	C	T20#	P1	
	R			
	F			
S4	R			

### Molduras

Referência	moldura	atuador	terminal	contato
M#	M#	T1#	E1	Q
		T2#	E2	G
		T3##	E3	
		R1#	P1	
		T5#		
		T6#		
		T7##		