

OUTLETS FOR APPLIANCES

SPECIFICATIONS:

ELECTRICAL CHARACTERISTICS: 10A or 20A in tensions until 250VAC.

Models with external and internal pit.

In accordance with brazilian standard of plugs and outlets (NBR 14136).

Products certified by Inmetro (versions with screw terminals) or certified by Bureau Veritas (versions with other types of terminals).



Reference	Number of Conductors	Pit
TPA1 - 3	3 (2P+T)	External
TPA2 - 3	3 (2P+T)	Internal

EXTERNAL PIT

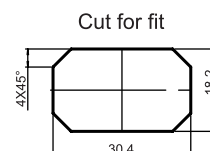
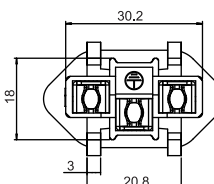
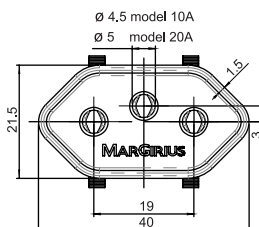
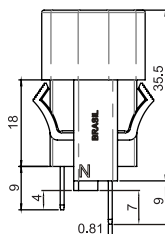
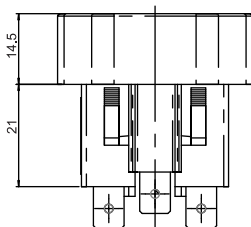


INTERNAL PIT



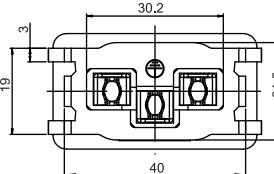
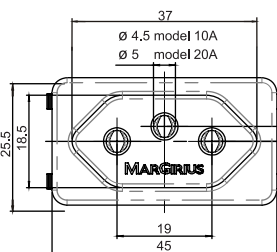
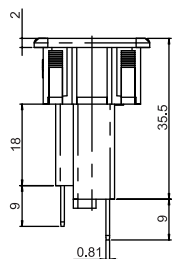
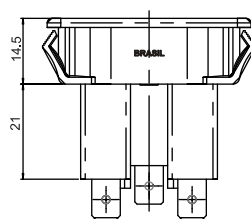
DIMENSIONS

EXTERNAL PIT



Panel thickness:
0,8 to 2mm
2 to 4mm*
*contact us

INTERNAL PIT



Panel thickness:
0,8 to 2mm
2 to 4mm*
*contact us

TERMINALS

E2* - Faston
4,8 x 0,8mm

E3 - Faston
6,3 x 0,8mm

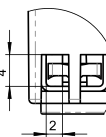
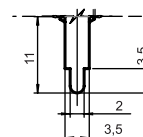
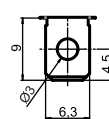
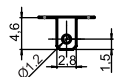
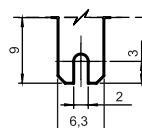
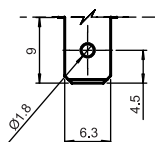
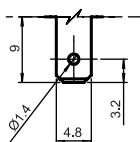
E4 - Faston with cut
6,3 x 0,8mm

E5 - Soldering
2,8 x 0,8mm

E6 - Soldering
6,3 x 0,8mm

CI - Printed circuit

P1 - Screw



*E2 terminal only for 10A outlets.

- COLORS

A - blue
AC - cream
B - white
C - yellow
D - green
E - red
F - black - (standard)
G - gray
H - brown

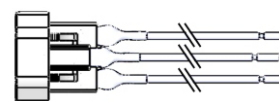
CONTACT

10A
20A

SELECTION GUIDE

Reference	Terminal	Color	Contact
TPA1 - 3	E2		10A
TPA2 - 3	E3		20A
	E4		
	E5		
	E6		
	CI		
	P1		
	Cable		

Cable - Lenght: 150mm*
3 x 1,5mm²



*Other lenghts contact us