

INDUSTRIAL PLUGS AND SOCKETS

For temporary electrical connections in applications requiring high currents, high mechanical strength and protection against harmful penetration of water and solid objects.

Construction according to the ABNT NBR IEC 60309 standard
 16A, 32A or 63A capacities
 2P+T, 3P+T or 3P+N+T versions
 Degree of protection IP44 or IP67 depending on the model



SPECIFICATIONS

Operating ambient temperature: From -20°C to 45°C

Abnormal heat and fire resistance: 650°C ⁽¹⁾ and 850°C ⁽²⁾

Operating frequency: 50/60Hz

Connection terminals	
Nominal current	Wire gauge
16A	2,5 to 4,0mm ²
32A	4,0 to 6,0mm ²
63A	10,0 to 16,0mm ²

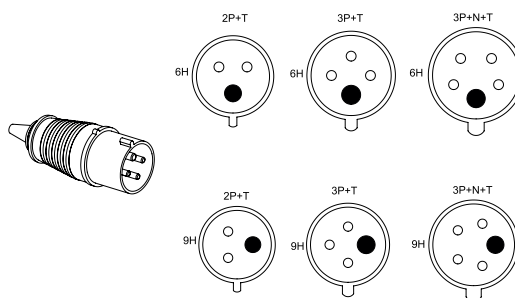
⁽¹⁾ For insulating parts not responsible for keeping current-carrying parts in position, in accordance with ABNT NBR IEC 60309.

⁽²⁾ For insulating parts responsible for keeping current-carrying parts in position, in accordance with ABNT NBR IEC 60309.

INDUSTRIAL MOBILE PLUGS

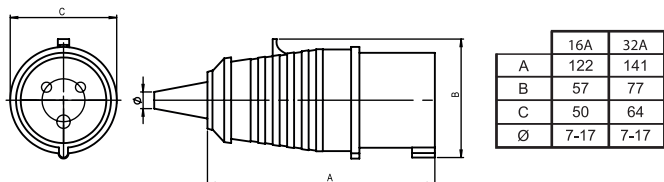
MODELS	POLES	NOMINAL CURRENT	POSITION OF THE EARTH PIN*		DEGREE OF PROTECTION
			Blue 200/250V~	Red 380/440V~	
PLN3-16M	2P+T	16A	6H	9H	IP44
PLN3-32M		32A	6H	9H	IP44
PLN3-63M		63A	6H	9H	IP67
PLN4-16M	3P+T	16A	9H	6H	IP44
PLN4-32M		32A	9H	6H	IP44
PLN4-63M		63A	9H	6H	IP67
PLN5-16M	3P+N+T	16A	9H	6H	IP44
PLN5-32M		32A	9H	6H	IP44
PLN5-63M		63A	9H	6H	IP67

* Ground pin position (front view) - Plugs

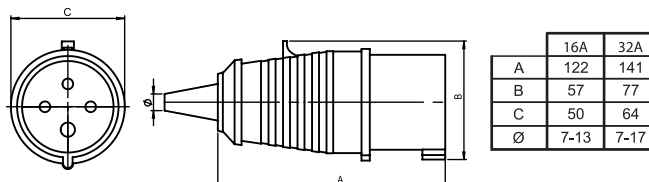


DIMENSIONS

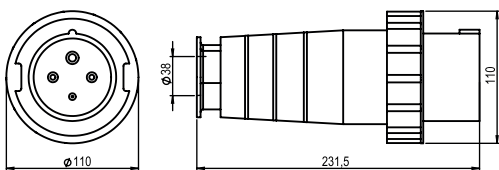
PLN3-16M and PLN3-32M



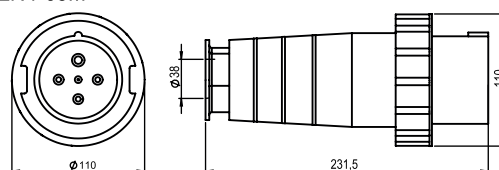
PLN4-16M and PLN4-32M



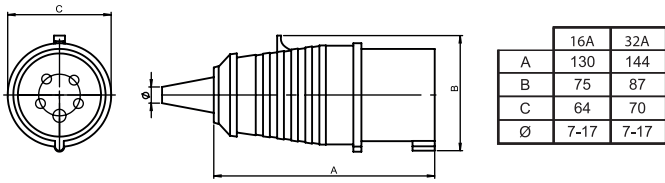
PLN3-63M



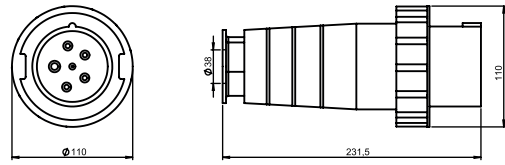
PLN4-63M



PLN5-16M and PLN5-32M



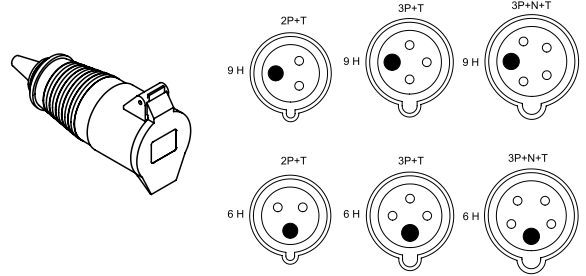
PLN5-63M



MOBILE INDUSTRIAL SOCKETS

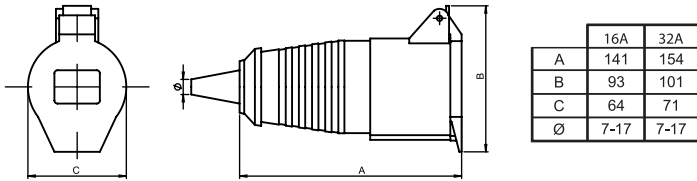
MODELS	POLES	NOMINAL CURRENT	POSITION OF THE EARTH PIN*		DEGREE OF PROTECTION
			Blue 200/250V~	Red 380/440V~	
TMI3-16M	2P+T	16A	6H	9H	IP44
TMI3-32M		32A	6H	9H	IP44
TMI3-63M		63A	6H	9H	IP67
TMI4-16M	3P+T	16A	9H	6H	IP44
TMI4-32M		32A	9H	6H	IP44
TMI4-63M		63A	9H	6H	IP67
TMI5-16M	3P+N+T	16A	9H	6H	IP44
TMI5-32M		32A	9H	6H	IP44
TMI5-63M		63A	9H	6H	IP67

*Position of earth contact (front view) - Sockets

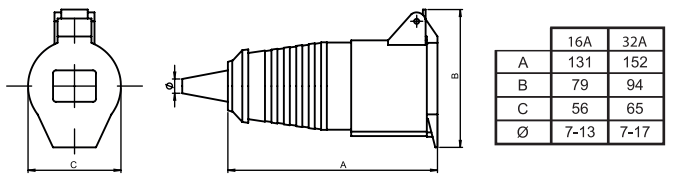


DIMENSIONS

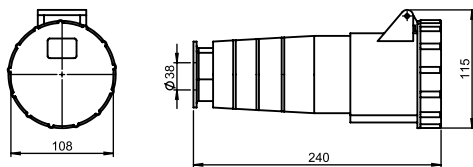
TMI3-16M and TMI3-32M



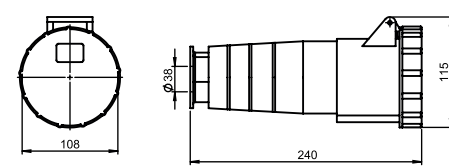
TMI4-16M and TMI4-32M



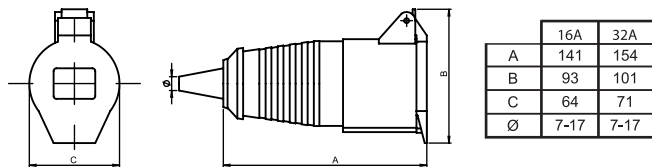
TMI3-63M



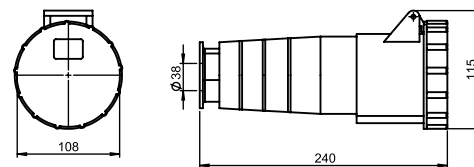
TMI4-63M



TMI5-16M and TMI5-32M



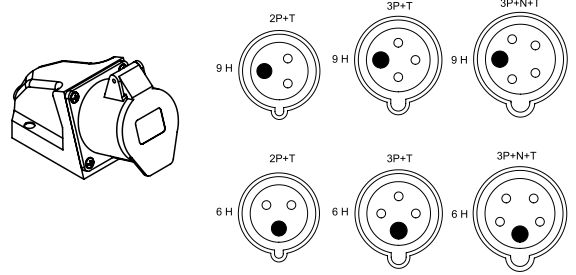
TMI5-63M



INDUSTRIAL SOCKETS TO OVERLAP

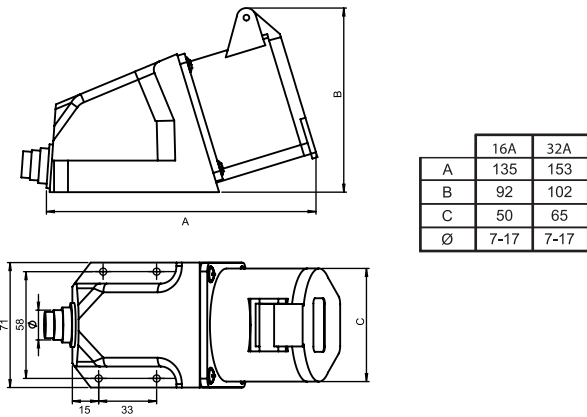
MODELS	POLES	NOMINAL CURRENT	POSITION OF THE EARTH PIN*		DEGREE OF PROTECTION
			Blue 200/250V~	Red 380/440V~	
TMI3-16S	2P+T	16A	6H	9H	IP44
TMI3-32S		32A	6H	9H	IP44
TMI3-63S		63A	6H	9H	IP67
TMI4-16S	3P+T	16A	9H	6H	IP44
TMI4-32S		32A	9H	6H	IP44
TMI4-63S		63A	9H	6H	IP67
TMI5-16S	3P+N+T	16A	9H	6H	IP44
TMI5-32S		32A	9H	6H	IP44
TMI5-63S		63A	9H	6H	IP67

*Position of earth contact (front view) - Sockets

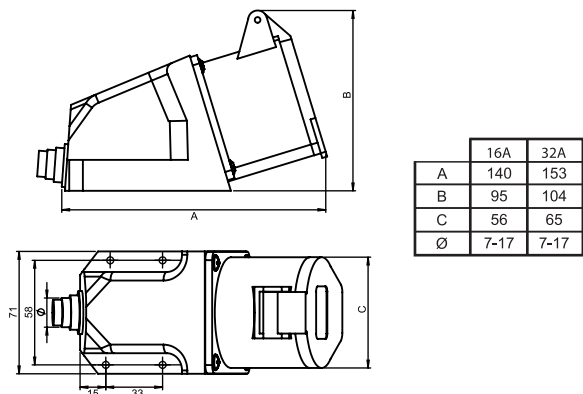


DIMENSIONS

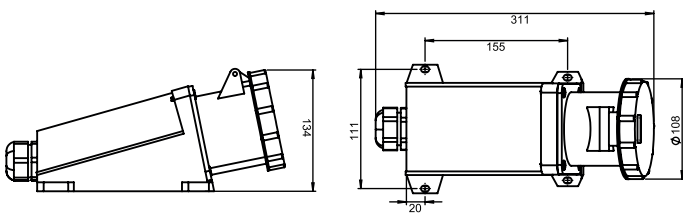
TMI3-16S and TMI3-32S



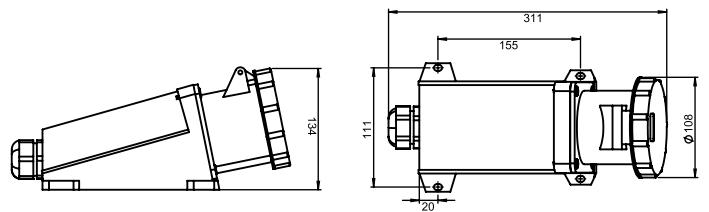
TMI4-16S and TMI4-32S



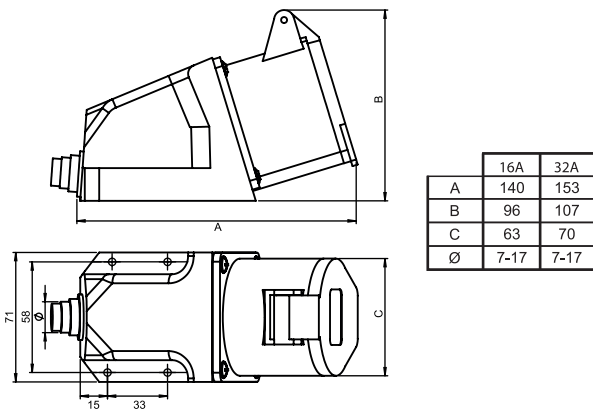
TMI3-63S



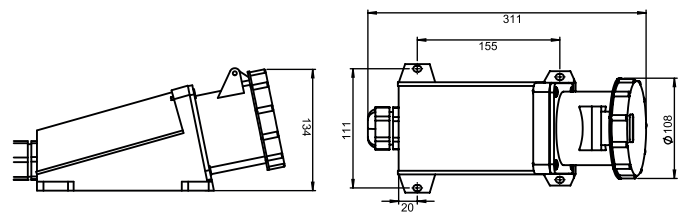
TMI4-63S



TMI5-16S and TMI5-32S



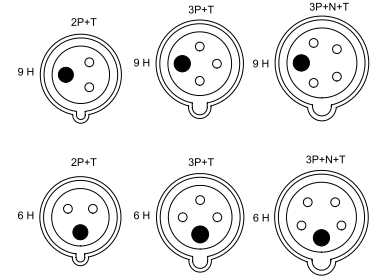
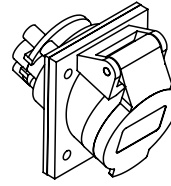
TMI5-63S



INDUSTRIAL SOCKETS TO INLAY

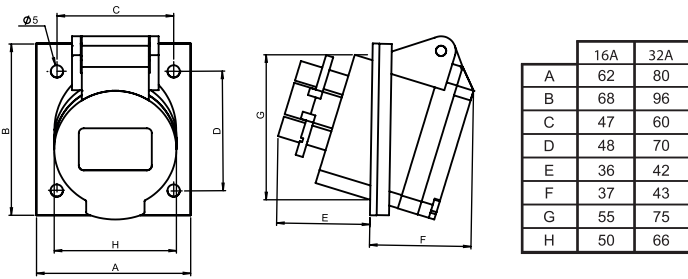
MODELS	POLES	NOMINAL CURRENT	POSITION OF THE EARTH PIN*		DEGREE OF PROTECTION
			Blue 200/250V~	Red 380/440V~	
TMI3-16E	2P+T	16A	6H	9H	IP44
TMI3-32E		32A	6H	9H	IP44
TMI3-63E		63A	6H	9H	IP67
TMI4-16E	3P+T	16A	9H	6H	IP44
TMI4-32E		32A	9H	6H	IP44
TMI4-63E		63A	9H	6H	IP67
TMI5-16E	3P+N+T	16A	9H	6H	IP44
TMI5-32E		32A	9H	6H	IP44
TMI5-63E		63A	9H	6H	IP67

*Position of earth contact (front view) - Sockets

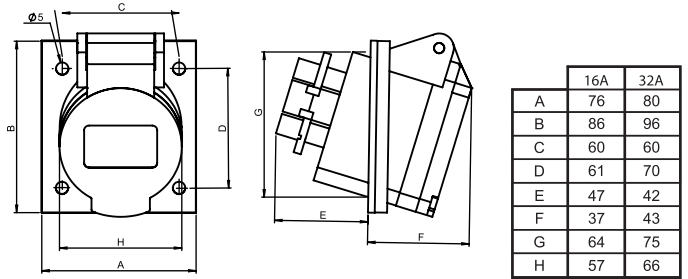


DIMENSIONS

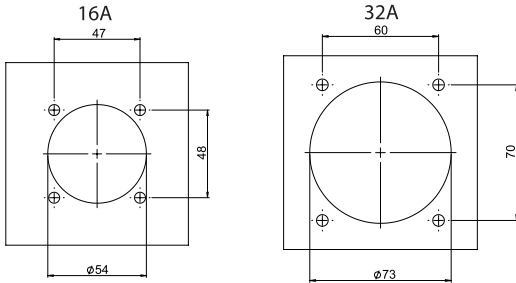
TMI3-16E and TMI3-32E



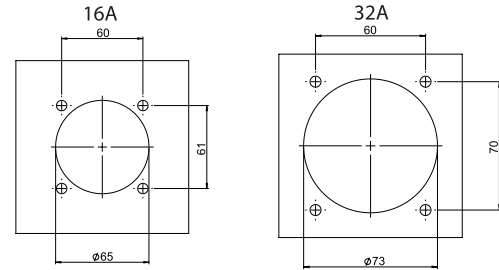
TMI4-16E and TMI4-32E



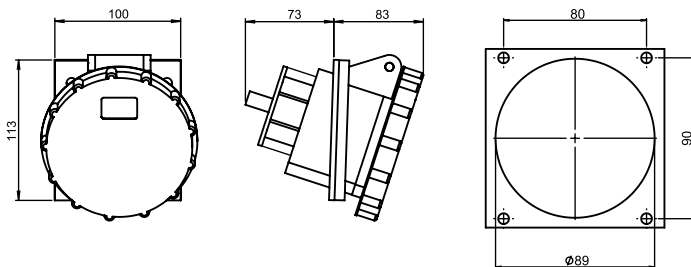
Panel drilling:



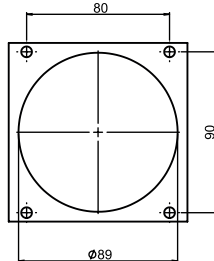
Panel drilling:



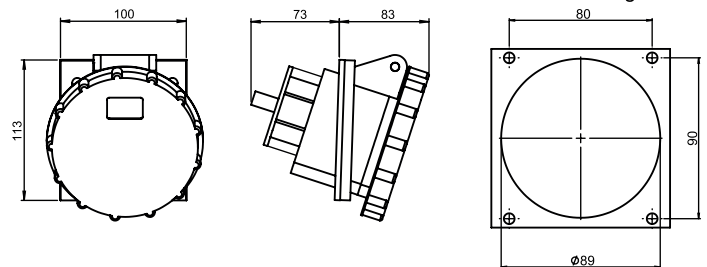
TMI3-63E



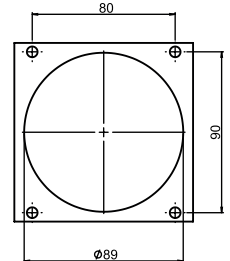
Panel drilling:



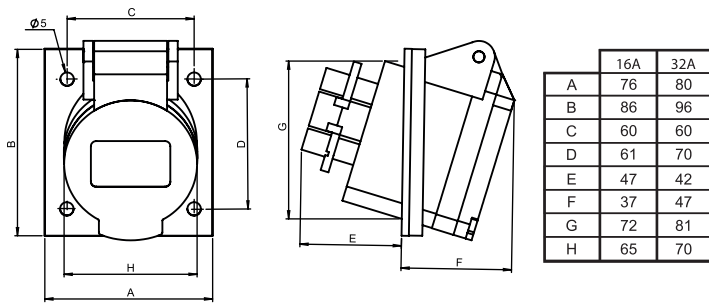
TMI4-63E



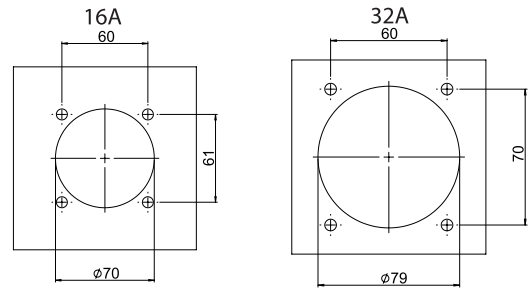
Panel drilling:



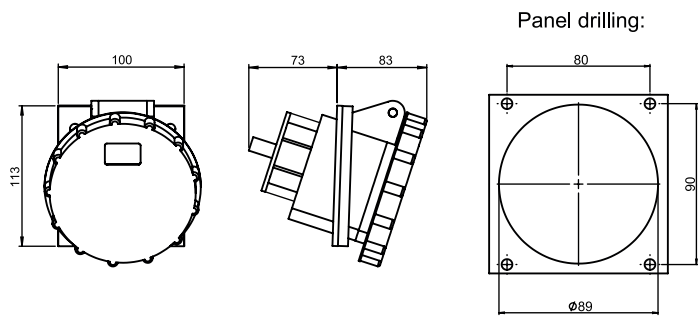
TMI5-16E and TMI5-32E



Panel drilling:



TMI5-63E



SELECTION GUIDE

Product	Poles	Nominal current	Configuration	Color and voltage*	Earth position*	Degree of protection*
PLN - Industrial plug	3 - 2P+T	16 - 16A	E - Inlay	Blue (200/250V~)	9H	IP44
TMI - Industrial socket	4 - 3P+T 5 - 3P+N+T	32 - 32A 63 - 63A	S - Overlay M - Mobile	Red (380/440V~)	6H	IP67

* Color combinations, voltages, pin/earth contact positions and degrees of protection available are given in the corresponding tables. For other options, consult our commercial area.