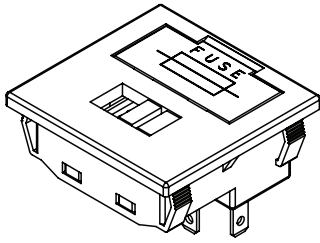


HHF SERIES

SLIDE SWITCHES WITH FUSE HOLDERS

switches
for appliances



SPECIFICATIONS:

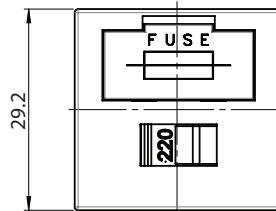
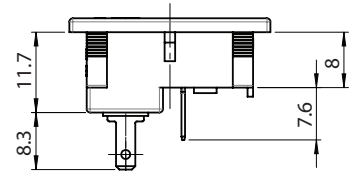
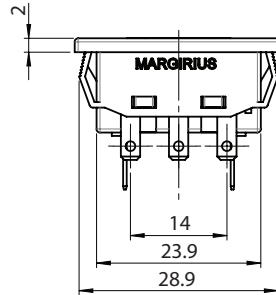
ELECTRICAL CHARACTERISTICS: 6A with resistive load 127VAC
or 3A with resistive load 250VAC (S contact)

MAXIMUM OPERATING TEMPERATURE: 55°C

ELECTRICAL LIFE: 10.000 cycles

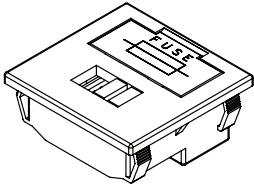
REFERENCES

Reference			Poles
HHF - 101	ON	ON	Unipolar
HHF - 201	ON	ON	Bipolar



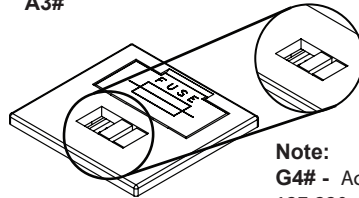
FRAME

M#



ACTUADOR

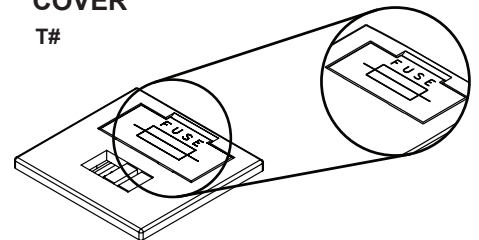
A3#



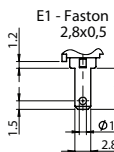
Note:
G4# - Actuator A3 with
127-220 marking

COVER

T#



TERMINAL



CONTACT

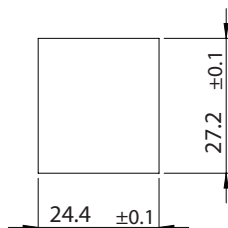
S - Standard
6A with resistive load 127VAC
3A with resistive load 250VAC

- COLORS

A - Blue **E** - Red
B - White **F** - Black (standard)
C - Yellow **G** - Gray
D - Green **H** - Brown

Note: Replace # with requested color code.

FIXING CUT



SELECTION GUIDE



Reference



frame
M#



actuator
A3#
G4#



cover
T#



terminal
E1



contact
S