

HH SERIES

SPECIFICATIONS:

ELECTRICAL CHARACTERISTICS : 10A with resistive load 120VAC or 6A with resistive load 250VAC.(Q contact).
CONTACT RESISTANCE: maximum of 20 miliohms with 1A DC.
INSULATION RESISTANCE: minimum of 1.000 megaohms.
DIELECTRIC WITHSTAND: 1.000V(RMS) for 1 minute (minimum).
OPERATION TEMPERATURE: from 0°C to 55°C.



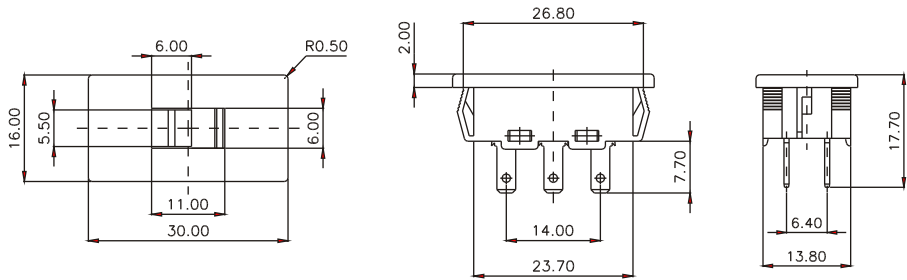
Certified Product*



* Call us

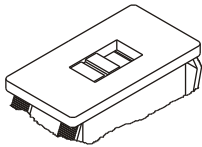
REFERENCES

Reference			Poles
HH - 101	On	On	One-pole
HH - 201	On	On	Double-pole



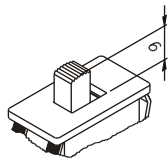
FRAME

M1# - standard

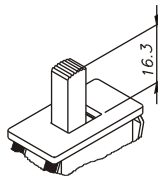


ACTUATORS

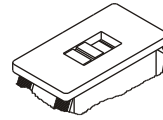
A1# - (call us)



A2# - (call us)



A3#

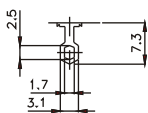


Note:

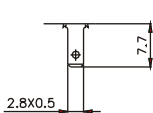
G3# - Actuator A3 with 110-220 marking.
G4# - Actuator A3 with 127-220 marking.

TERMINALS

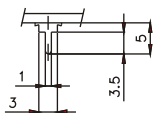
S1 - solder
7,5 mm.



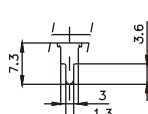
E1 - faston
2,8 x 0,5



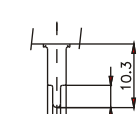
CC - PC



CI - PC



W1 - PC



W2 - PC



CONTACTS

S - Standard

6A with resistive load 120VAC
 3A with resistive load 250VAC

Q - Silver

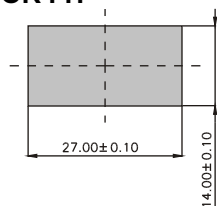
10A with resistive load 120VAC
 6A with resistive load 250VAC

- COLORS

Note: Substitute # by the code of requested color.

A - blue
B - white
C - yellow
D - green
E - red
F - black - (standard)
G - gray
H - brown

CUT FOR FIT



Suitable for panels with a thickness of 0,9 to 2,5 mm.

SELECTION GUIDE



Reference



frame
M1#



actuator
A1# (Call us)
A2# (Call us)
A3#
G3#
G4#



terminal
S1
E1
CC
CI
W1
W2



contact
S
Q