

# CONTACTORS - CTM1 SERIES

CTM1 series contactors are intended for use in circuits with alternating voltages of up to 690V, in applications such as starting, control and protection of three-phase motors, in addition to other power loads that require activation from a command circuit.

They allow the association of safety devices, such as thermal relays, phase failure relays and others.

Conforms to the IEC60947 standard.



## SPECIFICATIONS

Rated insulation voltage: 690V~

Ambient operating temperature: -20°C to 60°C

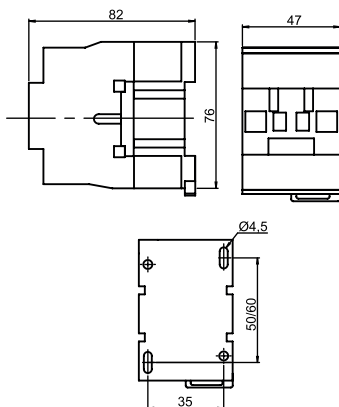
Maximum altitude of use: 2000m

Operating frequency: 60Hz

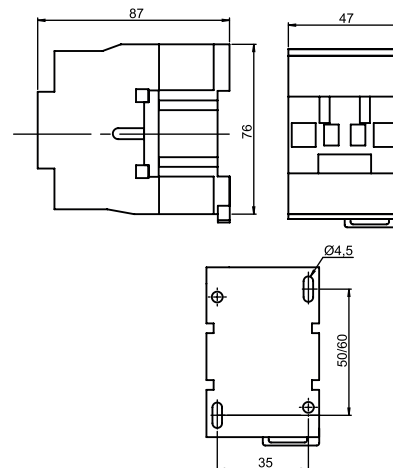
Characteristics		Models									
		CTM1 09	CTM1 12	CTM1 18	CTM1 25	CTM1 32	CTM1 40	CTM1 50	CTM1 65	CTM1 80	CTM1 95
Ie (AC-3) 380/400V~		9A	12A	18A	25A	32A	40A	50A	65A	80A	95A
Power contacts		3 NO	3 NO	3 NO	3 NO	3 NO	3 NO	3 NO	3 NO	3 NO	3 NO
Auxiliary contacts		1NO or 1NC	1NO or 1NC	1NO or 1NC	1NO or 1NC	1NO or 1NC	1NO + 1NC	1NO + 1NC	1NO + 1NC	1NO + 1NC	1NO + 1NC
Coils (60Hz)		127V or 220V	127V or 220V	127V or 220V	127V or 220V	127V or 220V	127V or 220V	127V or 220V	127V or 220V	127V or 220V	127V or 220V
Ith (AC-1)		20A	20A	32A	40A	50A	60A	70A	80A	110A	125A
Power (kW) (AC-3) 3 phases	220V~	2,2	3	4	5,5	7,5	11	15	18,5	22	22
	380/400V~	4	5,5	5,5	11	15	18,5	22	30	37	45
	660/690V~	5,5	7,5	7,5	15	18,5	30	30	37	45	45
Power (hp)	230V~ 1 phase	2	2	3	3	3	10	10	10	15	15
	200-230V~ 3 phases	3	3	5	7,5	10	15	15	15	25	25
	460V~ 3 phases	5	7,5	10	15	20	30	30	30	50	60
	575V~ 3 phases	10	10	10	20	30	30	30	30	50	60
Electrical life	AC-3 (x10 <sup>4</sup> )	100	100	100	100	80	80	60	60	60	60
	AC-4 (x10 <sup>4</sup> )	20	20	20	20	20	15	15	15	10	10
Mechanical life (x10 <sup>4</sup> )		1000	1000	1000	1000	800	800	800	800	600	600

## DIMENSIONS

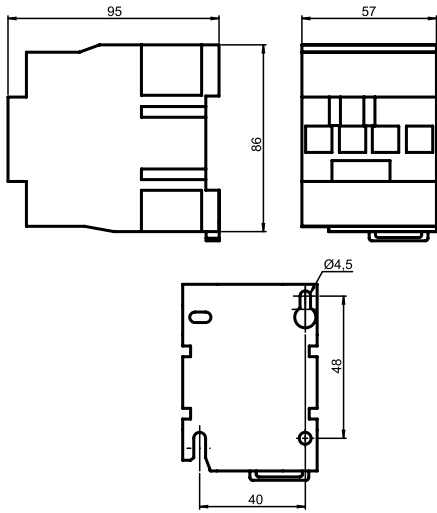
CTM1-09 and 12



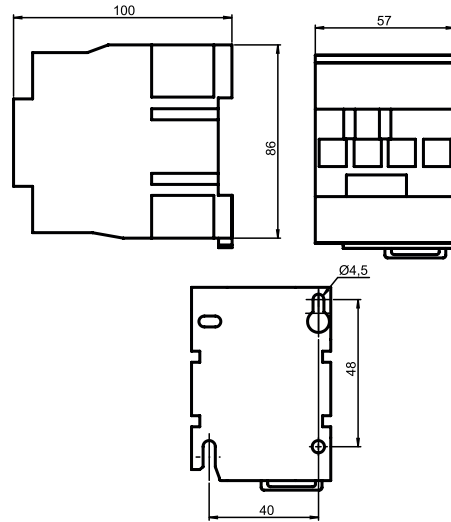
CTM1-18



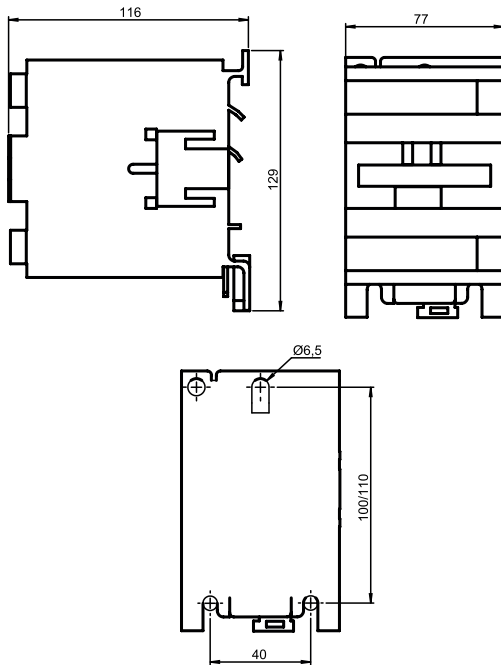
CTM1-25



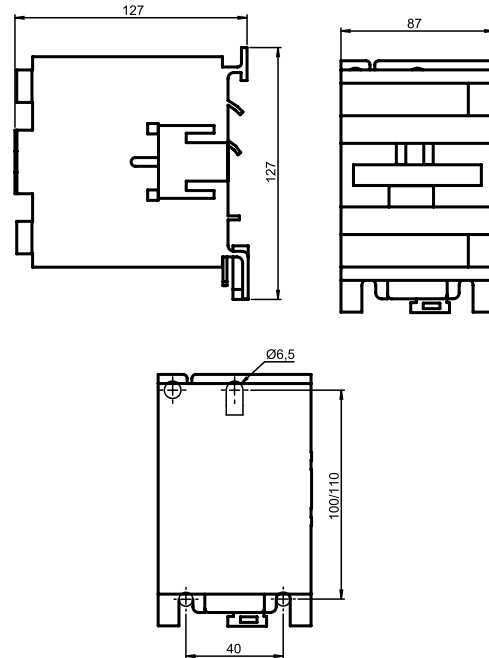
CTM1-32



CTM1-40, 50 and 65



CTM1-80 and 95



**SELECTION GUIDE\***

CTM1 -

□□  
Rated current  
(AC-3)

□□  
Auxiliary  
contacts

□□  
Power  
contacts

□□□□  
Coil  
voltage

□□□  
Coil  
frequency

09 - 9A  
12 - 12A  
18 - 18A  
25 - 25A  
32 - 32A  
40 - 40A  
50 - 50A  
65 - 65A  
80 - 80A  
95 - 95A

10 - 1NO  
01 - 1NC  
11 - 1NO+1NC

P30 - 3NO

B127 - 127V~  
B220 - 220V~

F60 - 60Hz

\*Other options on request.