

# 40.000 SERIES

## SNAP ACTION MICROSWITCHES

### SPECIFICATIONS:

**ELECTRICAL CHARACTERISTICS :** 15A with resistive load  
120/250VAC (Q contact).

**CONTACT RESISTANCE:** maximum of 10 miliohms with 1A DC.

**INSULATION RESISTANCE:** minimum of 1.000 megaohms.

**DIELECTRIC WITHSTAND:** 1.000V(RMS) for 1 minute (minimum).

**OPERATION TEMPERATURE:** from 0°C to 55°C.



Produto Certificado\*



\*Sob consulta

### REFERENCES

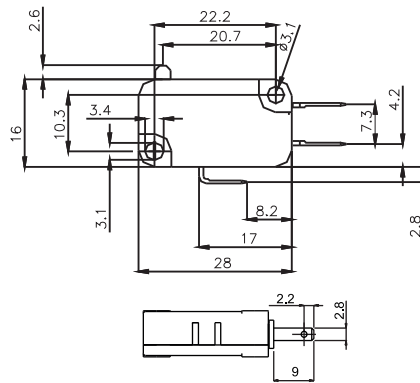
Reference	Pos 1	Pos 2	Function
40.108	(ON)	ON	IR
40.127	(ON)	OFF	NA
40.129	(OFF)	ON	NF

( ) Momentary

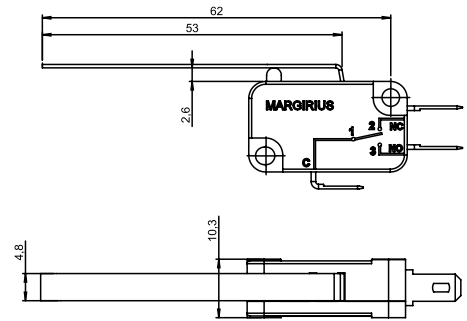
IR - Reversible

NA - Normally opened

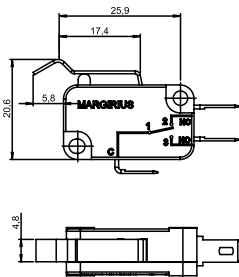
NF - Normally closed



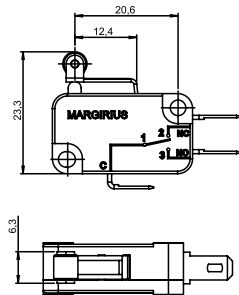
A1 - Actuador with basic pin



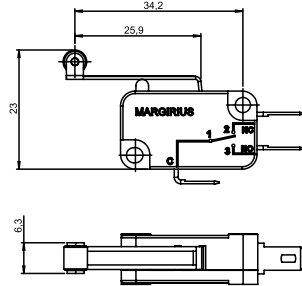
A2 - Atuador com haste rigida plana



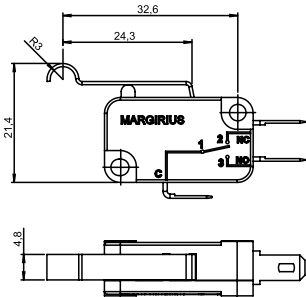
A3 - Atuador com haste rigida



A4 - Atuador com haste rigida e rolete

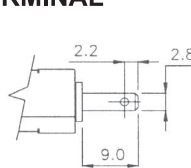


A5 - Atuador com haste rigida longa e rolete

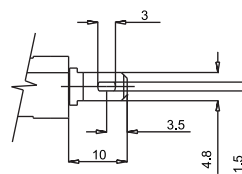


A6 - Atuador com haste rigida

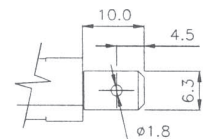
### TERMINAL



E1 - Faston 2,8 x 0,5



E2 - Faston 4,8 x 0,5



E3 - Faston 6,3 x 0,8

### CONTACTS

**S** - Standard  
3A with resistive load 120/250VAC.

**B**  
10A with resistive load 120/250VAC.

**Q**  
15A with resistive load 120/250VAC.

### SELECTION GUIDE

Reference	actuator	terminal	contact
	A1	E1	S
	A2	E2	B
	A3	E3	Q
	A4		
	A5		
	A6		

**Note:** For other actuator A2 sizes and other actuators types, call us.

