

# 36.000 SERIES

## PUSHBUTTON SWITCHES

### SPECIFICATIONS:

**ELECTRICAL CHARACTERISTICS:** 15A with resistive load 120VAC or 10A with resistive load 250VAC (G contact).

**CONTACT RESISTANCE:** maximum of 20 miliohms with 1A DC.

**INSULATION RESISTANCE:** minimum of 1.000 megaohms.

**DIELECTRIC WITHSTAND:** 1.000V(RMS) for 1 minute (minimum).

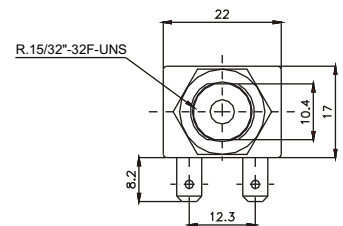
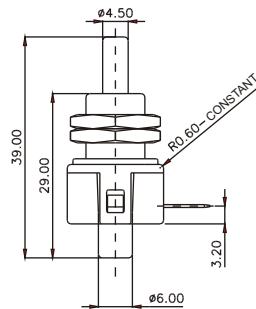
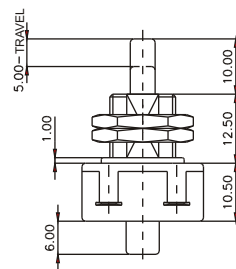
**OPERATION TEMPERATURE:** from 0°C to 55°C.



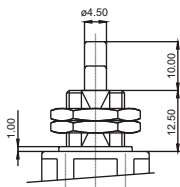
### REFERENCES

Reference	Pos 1	Pos 2
36.123	ON	OFF
36.127	(ON)	OFF

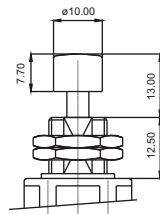
( ) momentary



### ACTUATORS

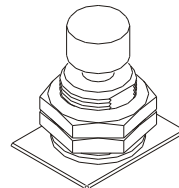


A1#

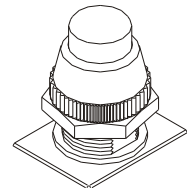


A2#

### NUTS



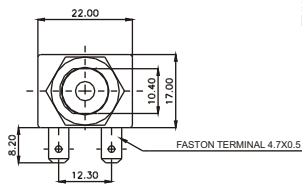
B1#



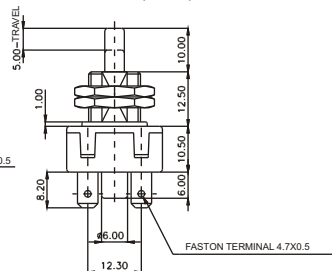
B2#

### TERMINALS

E2 - Axis - 4,7 x 0,5



E5 - Radial - 4,7 x 0,5



### CONTACTS

**S** - Standard  
6A with resistive load 120VAC  
3A with resistive load 250VAC

**B**  
12A with resistive load 120VAC  
8A with resistive load 250VAC

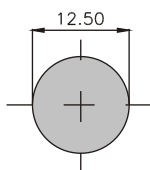
**G**  
15A with resistive load 120VAC  
10A with resistive load 250VAC

### # - COLORS

**Note:** Substitute # by the code of requested color.

- A - blue
- B - white
- C - yellow
- D - green
- E - red
- F - black - (standard)
- G - gray
- H - brown

### CUT FOR FIT



### SELECTION GUIDE



Reference



actuator

A1#

A2#



nut

B1#

B2#



terminal

E2

E5



contact

S

B

G

**Note:** If you do not substitute the symbol # by the color code, it will imply the standard black color F.