

33.000 SERIES

ROCKER SWITCHES

SPECIFICATIONS:

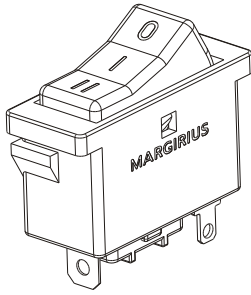
ELECTRICAL CHARACTERISTIC: 10A with resistive load
250VAC. (Q contact)

CONTACT RESISTANCE: maximum of 20 miliohms with 1A DC.

INSULATION RESISTANCE: minimum of 1.000 megaohms.

DIELECTRIC WITHSTAND: 1.250V(RMS) for 1 minute (minimum).

OPERATION TEMPERATURE: from 0°C to 55°C.



Certified Product*



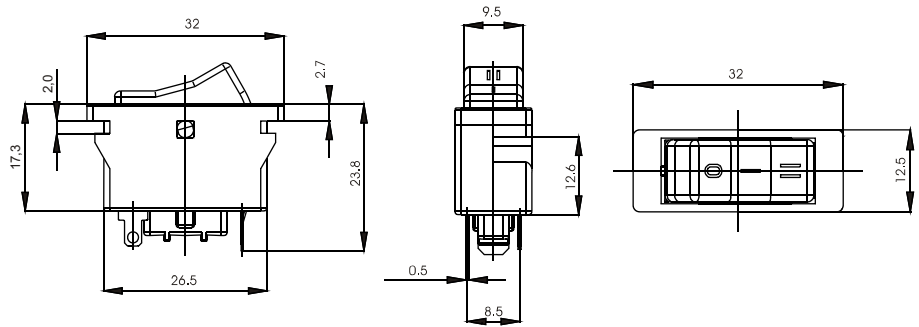
*Call us



REFERENCES

Reference			
33121	C	1	2

Note: C = common terminal



FRAME

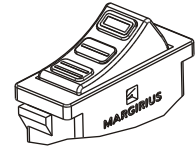
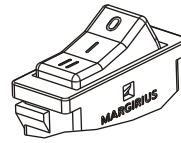
M1F



ACTUATOR

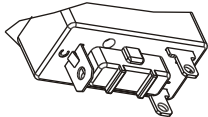
T1# - toggle

T2# - toggle



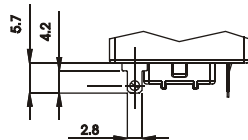
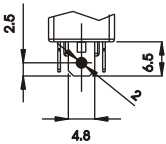
TERMINAL

W1



Faston terminal:
4,8 x 0,5

Terminals 1 and 2
Solder (standard)



CONTACT

Q - Silver

10A with resistive load 250VAC

- COLORS

Note: Substitute # by the code of requested color.

- | | |
|------------|----------------------|
| A - blue | E - red |
| B - white | F - black (standard) |
| C - yellow | G - gray |
| D - green | H - brown |

SELECTION GUIDE

33121

Reference



frame
M1F



actuator
T1#
T2#



terminal
W1



contact
Q

Note: The frame is available just with black color. For other colors call us.