

# 29.200 SERIES

## ROCKER SWITCHES

### SPECIFICATIONS:

- ELECTRICAL CHARACTERISTICS:** 15A with resistive load 120VAC and 10A with resistive load 250VAC. (Q contact)
- CONTACT RESISTANCE:** maximum of 20 miliohms with 1A DC.
- INSULATION RESISTANCE:** minimum of 1.000 megaohms.
- DIELECTRIC WITHSTAND:** 1.000V(RMS) for 1 minute (minimum).
- OPERATION TEMPERATURE:** from 0°C to 55°C.



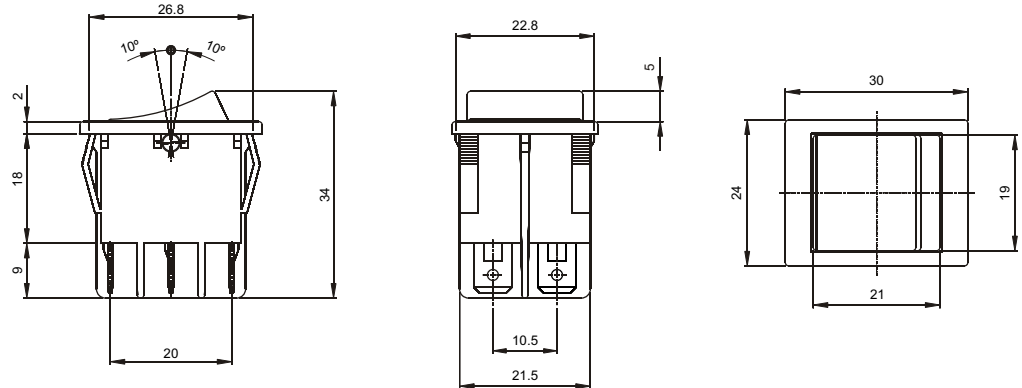
### REFERENCES

#### Single-Pole

Reference		
29101	ON	ON
29108	ON	(ON)
* 29123	ON	OFF
29127	(ON)	OFF
29129	ON	(OFF)

#### Double-Pole

Reference		
29201	ON	ON
29208	ON	(ON)
* 29223	ON	OFF
29227	(ON)	OFF
29229	ON	(OFF)

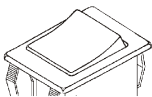


( ) Momentary

\* Possible options with indicator lamp 120/250 VAC.  
**Note:** For other tensions call us.

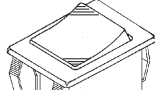
### FRAME

M2# - Standard

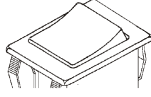


### ACTUATORS

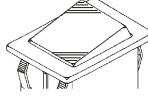
T1# - rocker illuminated



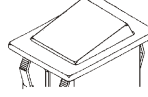
T2# - rocker



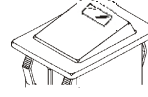
T3# - rocker illuminated



T4# - rocker



T5## - rocker with lens

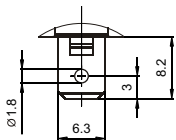


T6## - rocker with lens



### TERMINAL

E3 - faston 6,3 x 0,8



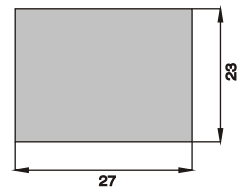
### CONTACTS

- S** - Standard  
4A with resistive load 120VAC  
2A with resistive load 250VAC
- B**  
10A with resistive load 120VAC  
6A with resistive load 250VAC
- Q**  
15A with resistive load 120VAC  
10A with resistive load 250VAC
- G**  
20A with resistive load 120VAC  
15A with resistive load 250VAC

### # - COLORS

- Note:** Substitute # by the code of requested color.
- A** - blue
  - B** - white
  - C** - yellow
  - D** - green
  - E** - red
  - F** - black - (standard)
  - G** - gray
  - H** - brown

### CUT FOR FIT



Minimum panel tickness  
0,85 ±0,10mm

Maximum panel tickness:  
3,70 ±0,10mm

### SELECTION GUIDE

□□□□□	□□□	□□□□	□□	□
Reference	frame	actuator	terminal	contact
	M2#	T1# T2# T3# T4# T5## T6##	E3	S B Q G

**Note:** Rockers T5 and T6 have light finder. It is necessary to codify the both colors, one for rocker and one for finder.  
**Ex:** T5FE - Black rocker with red light finder.