

# 20.100 SERIE

## ROCKERS SWITCHES

### SPECIFICATIONS:

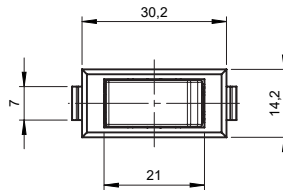
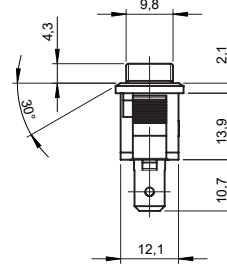
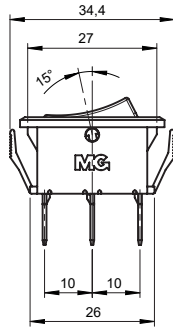
**ELECTRICAL CHARACTERISTICS:** 15A with resistive load 120VAC or 10A with resistive load 250VAC (Q Contact).  
**CONTACT RESISTANCE:** maximum of 20 miliohms with 1A in DC.  
**INSULATION RESISTANCE:** minimum of 1.000 megaohms.  
**DIELECTRIC WITHSTAND:** 1.000V(RMS) for 1 minute (minimum).  
**OPERATION TEMPERATURE:** from 0°C to 55°C.



### REFERENCE

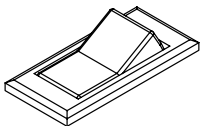
Reference		
20.101	ON	ON
20.108	ON	(ON)
20.123	ON	OFF
20.127	(ON)	OFF

( ) Momentary

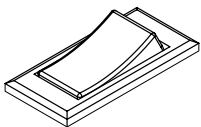


### FRAME

T1#

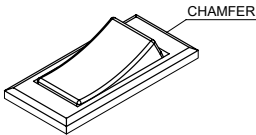


T2# - standard



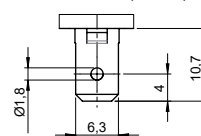
### ACTUATORS

M1# - standard



### TERMINAL

E3 - faston 6,3 x 0,8



### CONTACTS

S - Standard

6A with resistive load 120VAC  
3A with resistive load 250VAC

B

10A with resistive load 120VAC  
6A with resistive load 250VAC

Q

15A with resistive load 120VAC  
10A with resistive load 250VAC

G

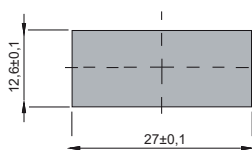
20A with resistive load 120VAC  
15A with resistive load 250VAC

### # - COLORS

- A - Blue
- B - White
- C - Yellow
- D - Green
- E - Red
- F - Black (standard)
- G - Gray
- H - Brown

**Note:** Substitute # by the code of request color.

### CUT FOR FIT



Minimum panel tickness - 0,80 ±0,1mm

Maximum panel tickness - 3,40 ±0,1mm

### SELECTION GUIDE



Reference



frame

M1#



actuador

T1#

T2#



terminal

E3



contact

S

B

Q

G

**Note:** If you do not substitute the symbol # by the code color, it will imply the standard black color F.