

17.000 SERIES

TOGGLE MICRO SWITCHES

SPECIFICATIONS:

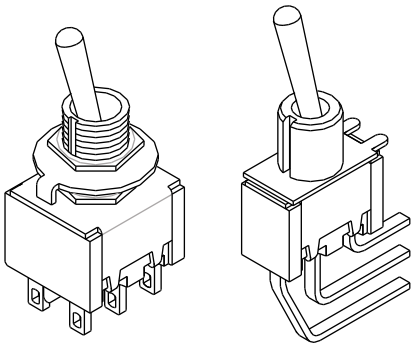
ELECTRICAL CHARACTERISTICS: 5A with resistive load 120 VAC or 2A with resistive load 250 VAC. (Q contact)

CONTACT RESISTANCE: maximum of 10 miliohms with 1A DC.

INSULATION RESISTANCE: minimum of 1.000 megaohms.

DIELECTRIC WITHSTAND: 1000 V (rms) for 1 minute (minimum).

OPERATION TEMPERATURE: from 0°C to 55°C.



REFERENCES

Single-Pole

Reference				() Momentary
17.101	ON	-	ON	
17.103	ON	OFF	ON	
17.105	(ON)	OFF	(ON)	
17.107	ON	OFF	(ON)	
17.108	ON	-	(ON)	
Terminals	2 - 3	-	2 - 1	

Double-Pole

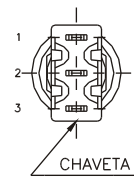
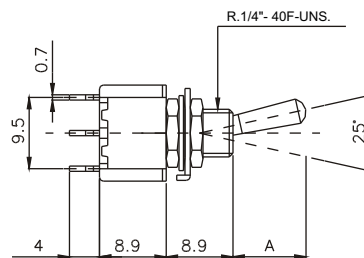
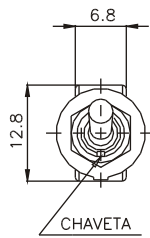
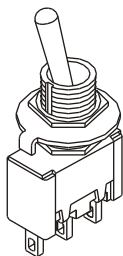
Reference				() Momentary
17.201	ON	-	ON	
17.203	ON	OFF	ON	
17.205	(ON)	OFF	(ON)	
17.207	ON	OFF	(ON)	
17.208	ON	-	(ON)	
Terminals	2 - 3 5 - 6	- -	2 - 1 5 - 4	
17.211	ON	ON	ON	
17.213	ON	ON	(ON)	
17.215	(ON)	ON	(ON)	
Terminals	2 - 3 5 - 6	2 - 3 5 - 4	2 - 1 5 - 4	

Three-Pole

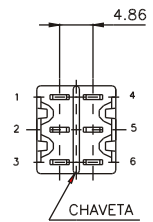
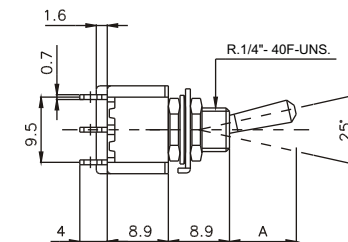
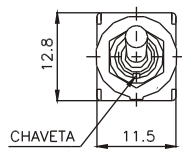
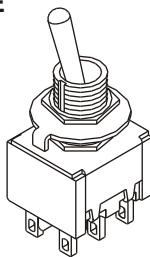
Reference				() Momentary
17.301	ON	-	ON	
17.303	ON	OFF	ON	
17.305	(ON)	OFF	(ON)	
17.307	ON	OFF	(ON)	
17.308	ON	-	(ON)	
Terminals	2 - 3 5 - 6 8 - 9	- -	2 - 1 5 - 4 8 - 7	

METALLIC TOGGLES

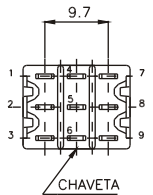
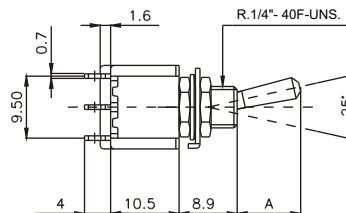
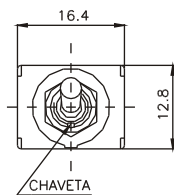
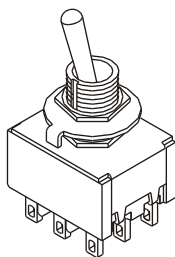
SINGLE-POLE



DOUBLE-POLE



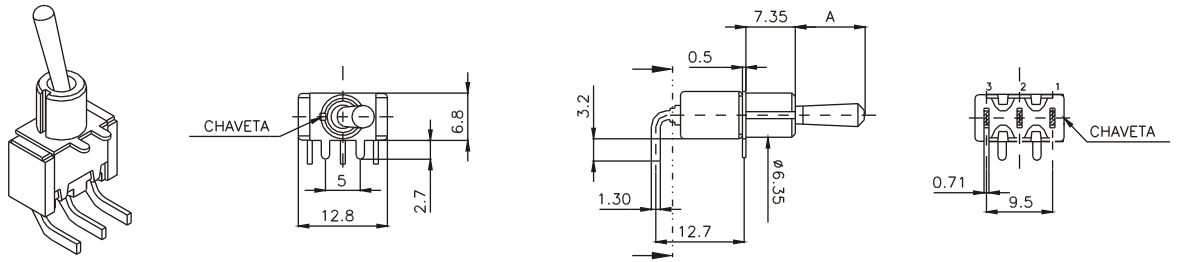
THREE-POLE



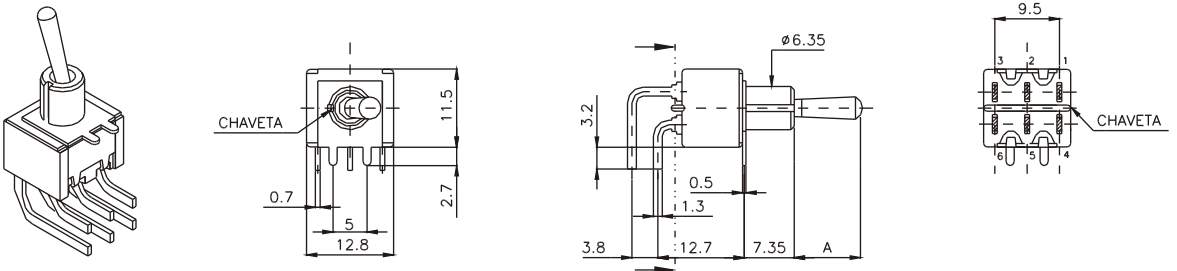
17.000 SERIES

METALLIC LEVER FOR PRINTED CIRCUIT HORIZONTAL MOUNTING ("MH" TERMINALS)

SINGLE-POLE

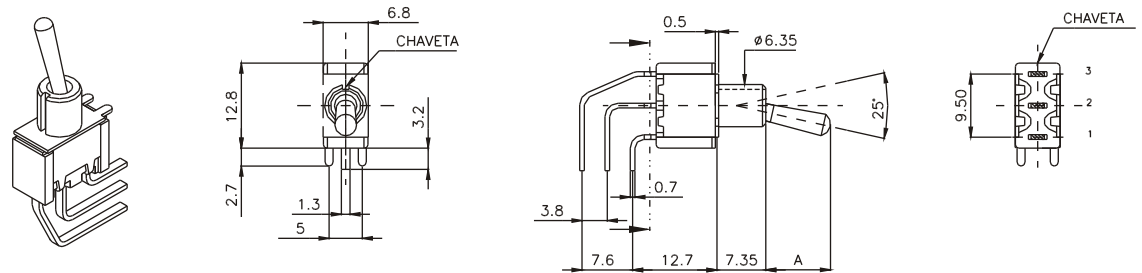


DOUBLE-POLE

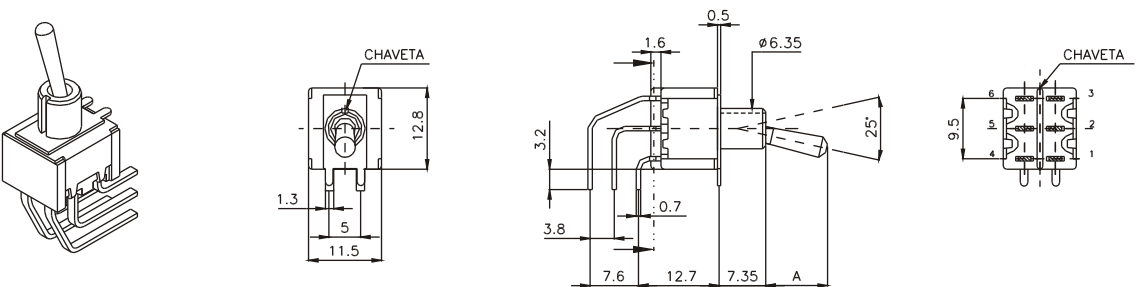


METALLIC TOGGLE FOR PRINTED CIRCUIT VERTICAL MOUNTING ("MV" TERMINALS)

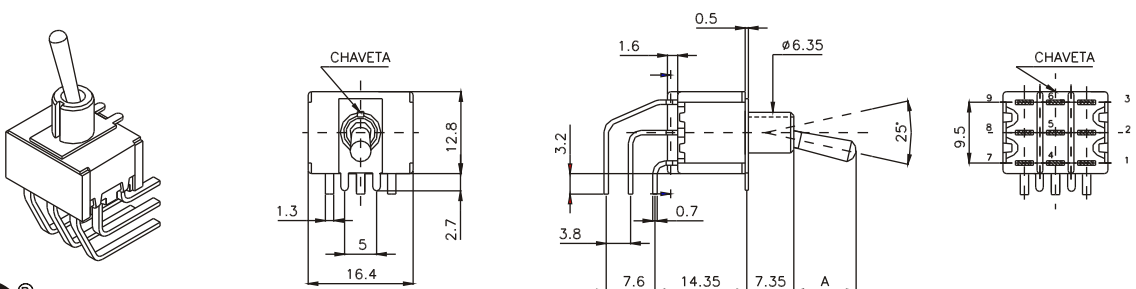
SINGLE-POLE



DOUBLE-POLE



THREE-POLE

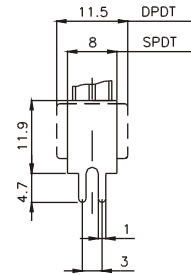
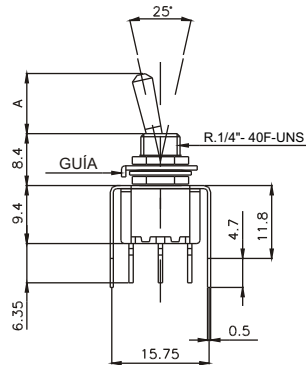
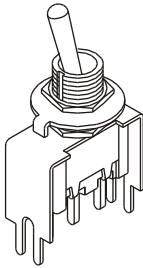


17.000 SERIES

METALLIC TOGGLE FOR PRINTED CIRCUIT

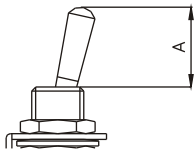
TOP MOUNTING ("MT" TERMINALS)

SINGLE-POLE
DOUBLE-POLE



ACTUATORS, BUSHINGS AND NUTS

ACTUATORS

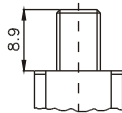


TYPE	MEASURE (mm)*
A1	5
A2	10
A3	14
A4	16

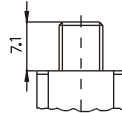
* Considerate dimensions with reference the bush 1-Standard.

BUSHINGS

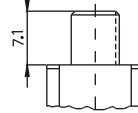
B1 - standard



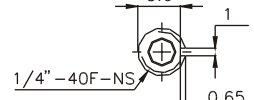
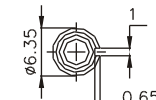
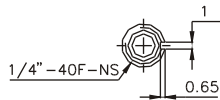
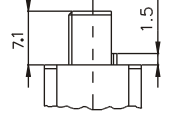
B2 - short



B3 - flat

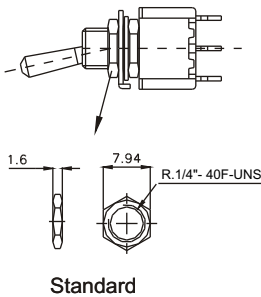


B4 - milled

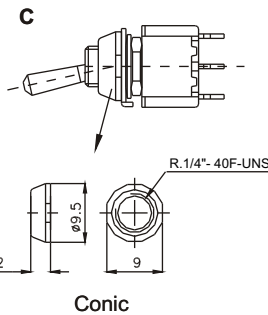


NUTS

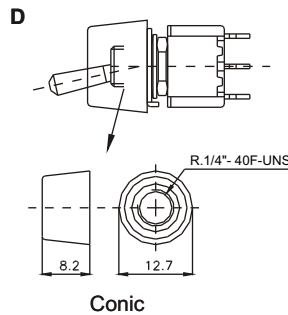
OTHER OPTIONS



Standard



Conic

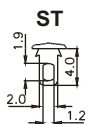


Conic

Note: Bushings B1, B2 and B4 normally have 2 washers which 1 localizer, 1 lock and 2 nuts. If you choose conic nut you need to add the letter "C" or "D".

Ex: B1C - Bush type B1 with 1 washer localizer and 1 nut and 1 conic nut.

TERMINALS



Note: These terminals are not available for micro switches in horizontal, vertical and top mounting, because their terminals are specified as **MH**, **MV** and **MT**, according to the selection guide.

All terminals normally have the epoxy seal.

17.000 SERIES

CONTACTS

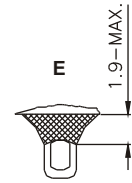
S - Copper with silver plate - Standard
3A with resistive load- 120 VAC.
1A with resistive load- 250 VAC.

Q - Silver alloy / nickel
5A with resistive load 120 VAC.
2A with resistive load 250 VAC.

B - Copper with gold plate over the nickel plate
0,4 Volts-Amps (VA) max. - 20V max. (AC/DC).

G - Silver alloy / nickel with gold plate
5A with resistive load 120 VAC.
2A with resistive load 250 VAC.
0,4 Volts-Amps (VA) max - 20V max (AC/DC).

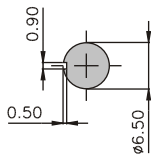
SEAL



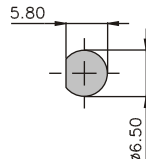
Note: All electrical switch has seal, so just add the letter **E** in the end of the codification

HOLE FOR FIT

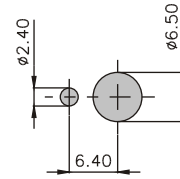
PANEL FOR METALLIC TOGGLE SWITCHES



Place for bushes

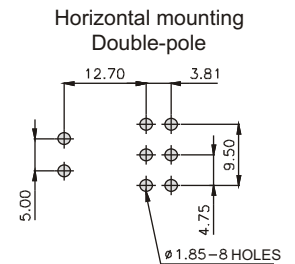
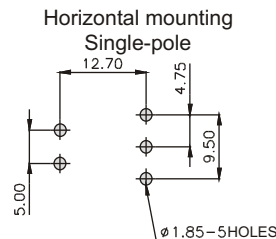
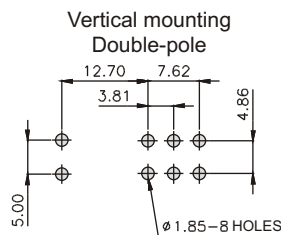
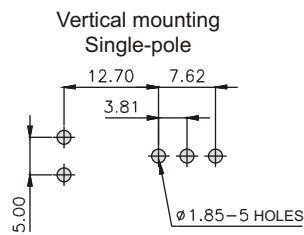


Place for bushes cuttered



Place for bushes

PC MOUNTING LAYOUT



SELECTION GUIDE

Metallic toggles

Reference	actuator	bushing	terminal	contact	seal
	A1	B1	ST	S	E
	A2	B2	CI	B	
	A3	B3	TE	Q	
	A4	B4	W1	G	
		B1C	W2		
		B2C	W3		
		B4C	W4		
		B1D			
		B2D			
		B4D			

Metallic horizontal, vertical and top mounting toggles

Reference	actuator	bushing	terminal	contact	seal
	A1	B1	MH	S	E
	A2	B2	MV	B	
	A3	B3	MT	Q	
	A4	B4		G	
		B1C			
		B2C			
		B4C			
		B1D			
		B2D			
		B4D			

Horizontal mounting (MH) not available for tripolar references (17.3XX)