

16.000 SERIES

ROCKER SWITCHES

SPECIFICATIONS:

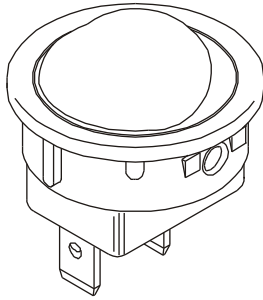
ELECTRICAL CHARACTERISTICS: 10A with resistive load 120VAC or 6A with resistive load 250VAC (B contact).

CONTACT RESISTANCE: maximum of 10 miliohms with 1A DC.

INSULATION RESISTANCE: minimum of 1.000 megaohms.

DIELECTRIC WITHSTAND: 1.000V(RMS) for 1 minute (minimum).

OPERATION TEMPERATURE: from 0°C to 55°C.



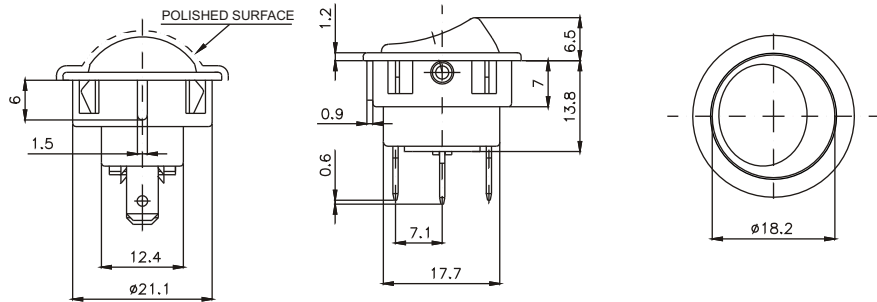
REFERENCES

Reference			
16.101	ON	-	ON
16.103	ON	OFF	ON
16.105	(ON)	OFF	(ON)
16.107	ON	OFF	(ON)
16.108	ON	-	(ON)
* 16.123	ON	-	OFF
16.127	(ON)	-	OFF
16.129	ON	-	(OFF)

() momentary

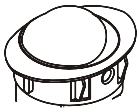
* Possible options with lamp 120/250VAC.

Note: For other tensions call us.

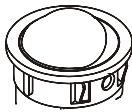


FRAMES

M8# - oval



M9# - standard

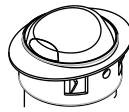


ACTUATORS

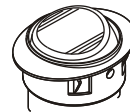
T8# - rocker without lamp



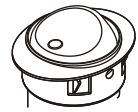
T9## - illuminated rocker with lens



T10# - illuminated rocker



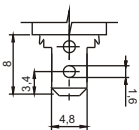
T11## - illuminated rocker with round lens



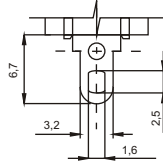
Note: The actuators T9, T10 and T11 are available only for reference 16123 and terminal E2 and S1.

TERMINALS

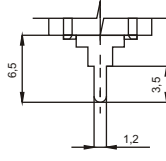
E2 - faston 4,8 x 0,8



S1 - solder (standard)



CI - Terminal PC



CONTACTS

S - Standard

6A with resistive load 120VAC

3A with resistive load 250VAC

B - Silver

10A with resistive load 120VAC

6A with resistive load 250VAC

G - Silver

15A with resistive load 120VAC

10A with resistive load 250VAC

- COLORS

Note: Substitute # by the code of requested color.

A - blue

B - white

C - yellow

D - green

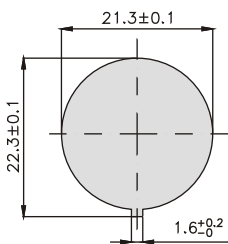
E - red

F - black - (standard)

G - gray

H - brown

CUT FOR FIT



Maximum panel thickness 1.5mm

SELECTION GUIDE

Rocker without lamp



Reference



frame
M8#
M9#



actuator

T8#



terminal

E2
S1
CI



contact

S
B
G

Note: Rockers T9 and T11 have light finder. It is necessary to codify both colors, one for rocker and one for finder.

Ex: T9FE - black rocker with red finder.

Rocker with lamp

16123

Reference



M8#
M9#



actuator

T9##
T10#
T11##



terminal

E2
S1



contact

S
B
G