

16.000 SERIES

ROCKER SWITCHES

SPECIFICATIONS:

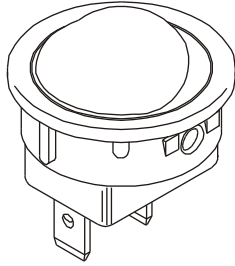
ELECTRICAL CHARACTERISTICS: 10A with resistive load 120VAC or 6A with resistive load 250VAC (B contact).

CONTACT RESISTANCE: maximum of 10 miliohms with 1A DC.

INSULATION RESISTANCE: minimum of 1.000 megaohms.

DIELECTRIC WITHSTAND: 1.000V(RMS) for 1 minute (minimo).

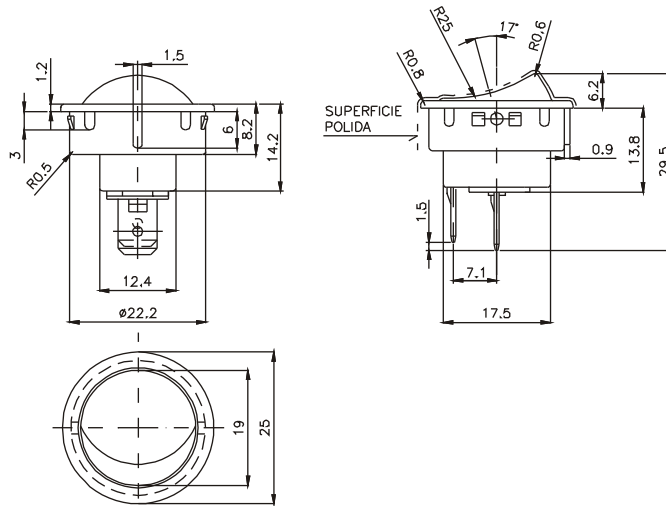
OPERATION TEMPERATURE: from 0°C to 55°C.



REFERENCES

Reference		
16.123	ON	OFF
16.127	(ON)	OFF
16.129	ON	(OFF)

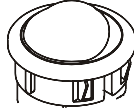
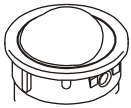
() momentary



FRAMES

M2# - standard

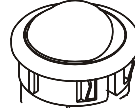
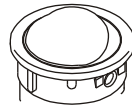
M5#



ACTUATORS

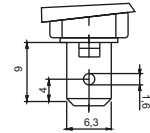
T4 - standard

T5#



TERMINAL

E3 - faston 6,3 x 0,8



CONTACTS

S - Standard

6A with resistive load 120VAC

3A with resistive load 250VAC

B

10A with resistive load 120VAC

6A with resistive load 250VAC

G

15A with resistive load 120VAC

10A with resistive load 250VAC

- COLORS

Note: Substitute # by the code of requested **color**.

A - blue

B - white

C - yellow

D - green

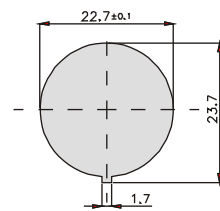
E - red

F - black - (standard)

G - gray

H - brown

CUT FOR FIT



Panel thickness:

M2# - 0.6mm

M5# - maximum 1.5mm

SELECTION GUIDE

□□□□□	□□□	□□□	□□	□
Reference	frame	actuator	terminal	contact
	M2# →	T4#	E3	S
	M5# →	T5#		B
				G

Note: Frame M2# must be required with rocker T4#. Frame M5# must be required with rocker T5#.