

# 16.000 SERIES

## ROCKER SWITCHES

### SPECIFICATIONS:

**ELECTRICAL CHARACTERISTICS:** 10A with resistive load 120VAC or 6A with resistive load 250VAC ( B contact).

**CONTACT RESISTANCE:** maximum of 10 miliohms with 1A DC.

**INSULATION RESISTANCE:** minimum of 1.000 megaohms.

**DIELECTRIC WITHSTAND:** 1.000V(RMS) for 1 minute (minimum).

**OPERATION TEMPERATURE:** from 0°C to 55°C.

Certified Product\*

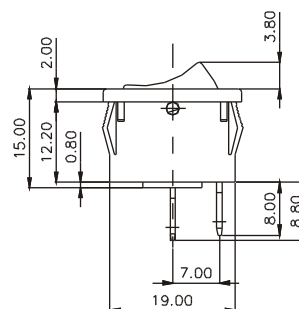
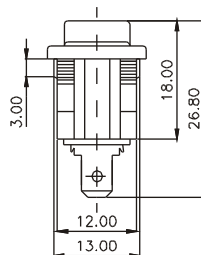
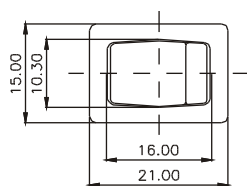


\*Call us



## REFERENCES

Reference			
16.101	ON	-	ON
16.103	ON	OFF	ON
16.105	(ON)	OFF	(ON)
16.107	ON	OFF	(ON)
16.108	ON	-	(ON)
* 16.123	ON	-	OFF
16.127	(ON)	-	OFF
16.129	ON	-	(OFF)
* 16.000	Finder Visor		



( ) momentary

\* Possilbe options with lamp 120/250VCA.

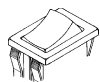
## FRAMES

**M#**  
4 fangs  
Standard

**M3#**  
with  
cover

**M4#**  
2 fangs

**M15#**  
4 fangs  
Polished  
surface



## ACTUATORS

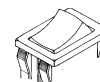
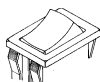
**T#**  
Rocker

**T2#**  
Finder

**T3#**  
Rocker

**T7#**  
Illuminated  
rocker

**T14#**  
Polished  
surface  
rocker



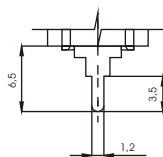
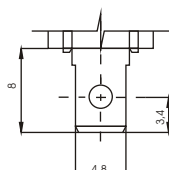
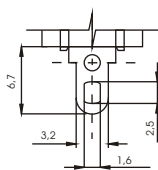
Note: Actuator T7# may be used only for reference 16.123 with E2 terminal and M or M3 frames.

## TERMINALS

**S1** - solder (standard)

**E2** - faston 4,8 x 0,8

**CI** - Terminal PC



## CONTACTS

**S** - Standard

6A with resistive load 120VAC

3A with resistive load 250VAC

**B**

10A with resistive load 120VAC

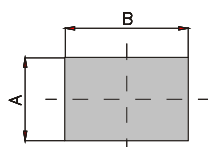
6A with resistive load 250VAC

**G**

15A with resistive load 120VAC

10A with resistive load 250VAC

## CUT FOR FIT



Panel thickness	A	B
0.5	13.2±0.1	18.9±0.1
1	13.2±0.1	18.9±0.1
1.5	13.2±0.1	19.2±0.1
2	13.2±0.1	19.2±0.1

## # - COLORS

Note: Substitute # by the code of requested color.

- A - blue
- B - white
- C - yellow
- D - green
- E - red
- F - black - (standard)
- G - gray
- H - brown
- CR - chrome-plated

Note: The CR color is available just for T rocker.

## SELECTION GUIDE

### Switch



Reference



frame

M#  
M3#  
M4#  
M15#



actuator

T#  
T3#  
T7#  
T14#



terminal

S1  
E2  
CI



contact

S  
B  
G

### Light finder

16000

Reference



frame  
M#



actuator  
T2#



terminal

S1  
E2  
CI