

15.000 SERIES

ROCKER SWITCHES

SPECIFICATIONS:

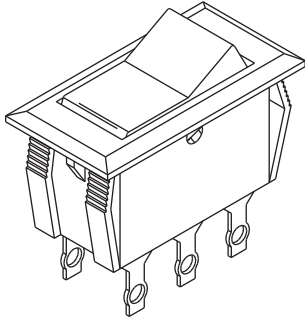
ELECTRICAL CHARACTERISTICS : 10A with resistive load 120VAC or 6A with resistive load 250VAC. (Q contact)

CONTACT RESISTANCE: maximum of 20 milliohms with 1A DC.

INSULATION RESISTANCE: minimum of 1.000 megaohms.

DIELECTRIC WITHSTAND: 1.000V(RMS) for 1 minute (minimum).

OPERATION TEMPERATURE: from 0°C to 55°C.



REFERENCES

Single Pole

Reference			
15.101	ON	-	ON
15.103	ON	OFF	ON
15.105	(ON)	OFF	(ON)
15.107	ON	OFF	(ON)
15.121	OFF	ON	ON
15.122	OFF	ON	(ON)
* 15.123	ON	-	OFF
15.127	(ON)	-	OFF
15.108	(ON)	-	ON

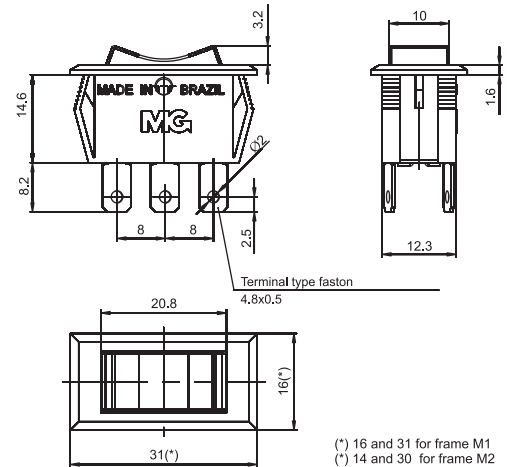
Double Pole

Reference			
15.201	ON	-	ON
15.203	ON	OFF	ON
15.205	(ON)	OFF	(ON)
15.207	ON	OFF	(ON)
15.223	ON	-	OFF

() Momentary

* Possible options with lamp 120/250 VAC.

Note: For other tensions call us.



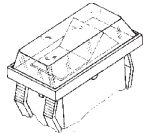
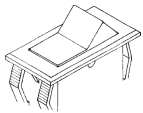
FRAME

M1# - 30,0mm x 16,0mm

M4# - M1 with cover

M2# - 30,0mm x 14,0mm

M5# - M1 polished



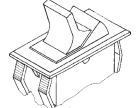
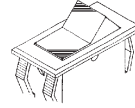
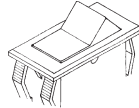
ACTUATORS

T1# - without lamp

T2# - illuminated

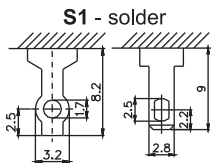
T4# - streaked

A1# - lever

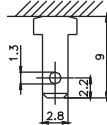


Note: The actuator T2# can be just used only for reference 15.123.

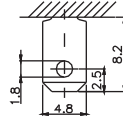
TERMINALS



E1 - faston 2,8 x 0,5



E2 - faston 4,8 x 0,5



Note: Terminal S1 is supplied according to our available in the stocks.
The E1 terminal is not available for reference 15.121

CONTACTS

S - Standard

6A with resistive load 120VAC

3A with resistive load 250VAC

Q - Silver

10A with resistive load 120VAC

6A with resistive load 250VAC

- COLORS

Note: Substitute # by the code of requested color.

A - blue

B - white

C - yellow

D - green

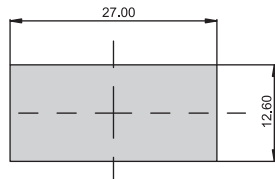
E - red

F - black - (standard)

G - gray

H - brown

CUT FOR FIT



SELECTION GUIDE



Reference



frame

M1#

M2#

M4#

M5#



actuator

T1#

T2#

T4#

A1#



terminal

S1

E1

E2



contact

S

Q

Note: If you do not substitute the symbol # by the code color, it will imply the standard black color F.