

14.000 SERIE

TOGGLE SWITCHES

SPECIFICATIONS:

ELECTRICAL CHARACTERISTICS: 15A with resistive load
120 VAC or 10A with resistive load 250 VAC. (Q contact)

CONTACT RESISTANCE: maximum of 20 miliohms with
with 1A DC.

INSULATION RESISTANCE: minimum of 1.000 megaohms.

DIELECTRIC WITHSTAND: 1000 V (rms) for 1 minute (minimum).

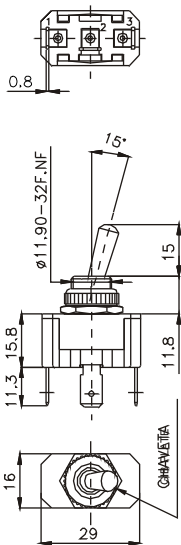
OPERATION TEMPERATURE: from 0°C to 55°C.



REFERENCES

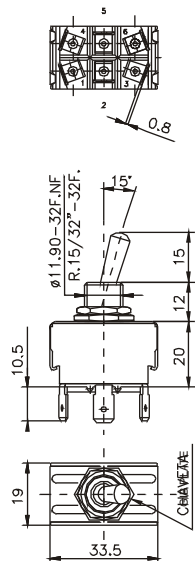
Single Poles

REF.				() momentary
14.101	ON	-	ON	
14.103	ON	OFF	ON	
14.105	(ON)	OFF	(ON)	
14.107	ON	OFF	(ON)	
14.108	ON	-	(ON)	
14.123	ON	-	OFF	
14.127	(ON)	-	OFF	



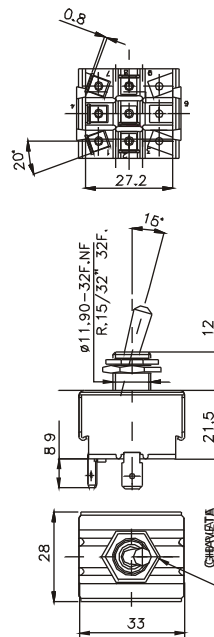
Double Poles

REF.				() momentary
14.201	ON	-	ON	
14.203	ON	OFF	ON	
14.205	(ON)	OFF	(ON)	
14.207	ON	OFF	(ON)	
14.208	ON	-	(ON)	
14.211	ON	ON	ON	
14.213	ON	ON	(ON)	
14.215	(ON)	ON	(ON)	
14.223	ON	-	OFF	
14.227	(ON)	-	OFF	



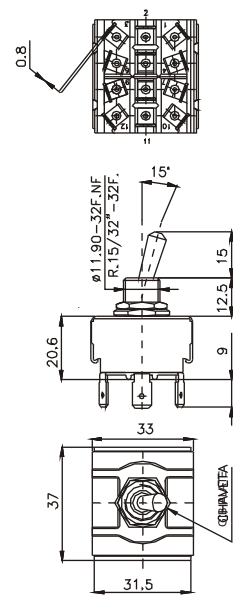
Three-Poles

REF.				() momentary
14.301	ON	-	ON	
14.303	ON	OFF	ON	
14.305	(ON)	OFF	(ON)	
14.307	ON	OFF	(ON)	
14.308	ON	-	(ON)	
14.323	ON	-	OFF	
14.327	(ON)	-	OFF	



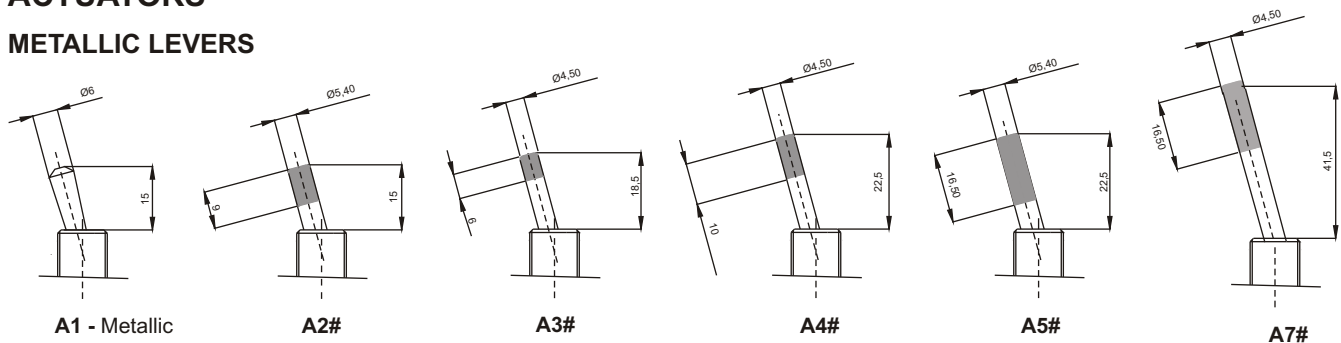
Four-Poles

REF.				() momentary
14.401	ON	-	ON	
14.403	ON	OFF	ON	
14.405	(ON)	OFF	(ON)	
14.407	ON	OFF	(ON)	
14.408	ON	-	(ON)	
14.411	ON	ON	ON	
14.413	ON	ON	(ON)	
14.415	(ON)	ON	(ON)	
14.423	ON	-	OFF	
14.427	(ON)	-	OFF	



ACTUATORS

METALLIC LEVERS



A1 - Metallic

A2#

A3#

A4#

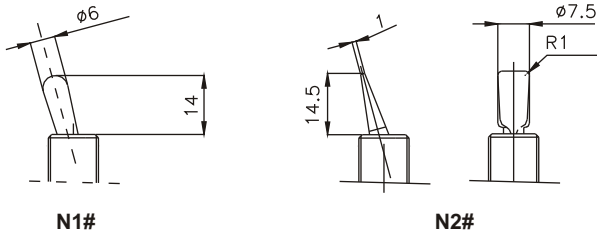
A5#

A7#

Note: The actuator A7# must be used for reference 14.200 or 14.400.

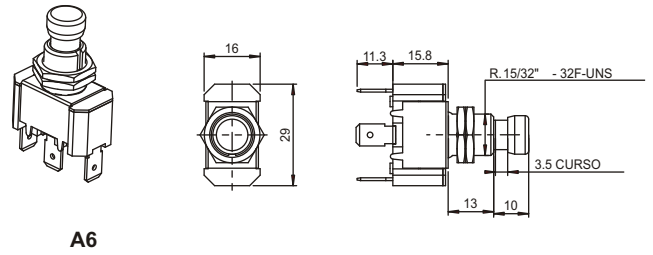
14.000 SERIE

ACTUATORS POLYAMIDE LEVERS



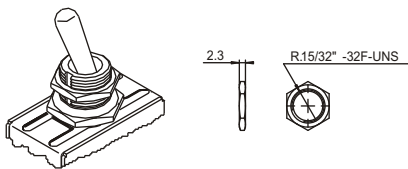
NOTE: Polyamide levers N1 and N2 are only available for products of series 14100 and 14200.
Fixing bushings of switch - polyamide.

PUSHBUTTON

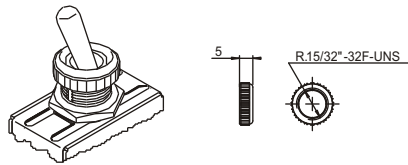


Note: The actuator A6 is only available for references 14101, 14123 and B1 nuts.

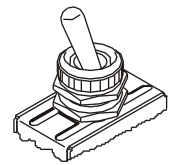
NUTS



B1 - Standard



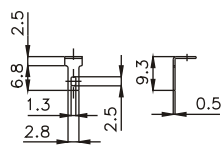
B2# - Polyamide



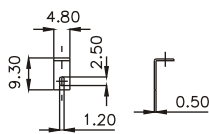
B3# = B1 + B2#

TERMINALS

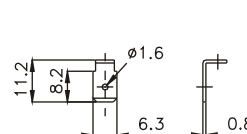
E1 - Quick connect
2,8 x 0,5 (standard)



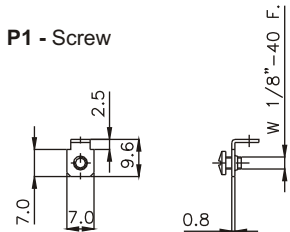
E2 - Quick connect
4,8 x 0,5



E3 - Faston 6,3 x 0,8



P1 - Screw



CONTACTS

Q - STANDARD
15A with resistive load 120VAC
10A with resistive load 250VAC

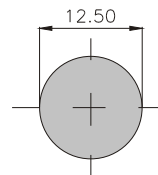
G
20A with resistive load 120VAC
15A with resistive load 250VAC

- COLORS

Note: Substitute # by the code of requested color.

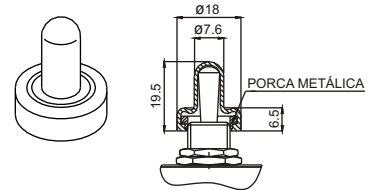
- A - blue
- B - white
- C - yellow
- D - green
- E - red
- F - black - (standard)
- G - gray
- H - brown

CUT FOR FIT



OPTIONAL - Cover

CP1F - PVC
CP1B - White elastomer
CP2F - Black elastomer (ANTI-UV)



SELECTION GUIDE

□□□□□	□□□	□□□	□□	□
Reference	actuator	nut	terminal	contact
A1	A6	B1	E1	Q
A2#	A7#	B2#	E2	G
A3#	N1#	B3#	E3	
A4#	N2#		P1	
A5#				

Note: • If you do not substitute the symbol # by the code color, it will imply the standard black color F.

• The cover (optional) is supplied separately and only for metallic toggle A1.